

ST02835CH

FAA Supplemental Type Certificate



Installation of Mounting Brackets for Future Mechanical Installation of Electronic Flight Bag Display Units (EFB DU) and Remote Processing Units (RPU) on Boeing 777 Series Aircraft (FAA STC ST02835CH)

OVERVIEW

- » FAA STC ST02835CH

INTRODUCTION

STC ST02835CH governs the installation of mounting brackets for future mechanical installation of electronic flight bag display units (EFB DU) and remote processing units (RPU) in accordance with Electronic Cable Specialists (ECS) Master Data List ECS-207771.

YOUR NEEDS

Provides modernized EFB system mounting provisions for Boeing 777 series aircraft.

YOUR BENEFITS

Incorporation of STC ST02835CH is required to support separate installation and operational approval of EFB mounting provisions in the cockpit. Once installed, the complete EFB system will provide flight crews the ability to interact with electronic maps, charts, and manuals in lieu of accessing standard paper documentation. System installation will reduce materials costs and aircraft weight without compromising ergonomic concerns.

STC AIRCRAFT EFFECTIVITY

- » Boeing 777-200/-200LR/-300/-300ER series aircraft

STC LIMITATIONS

- » None

STC CONFIGURATIONS

- » Configuration 1: Installation of mounting brackets for the future installation of EFB DUs and RPUs

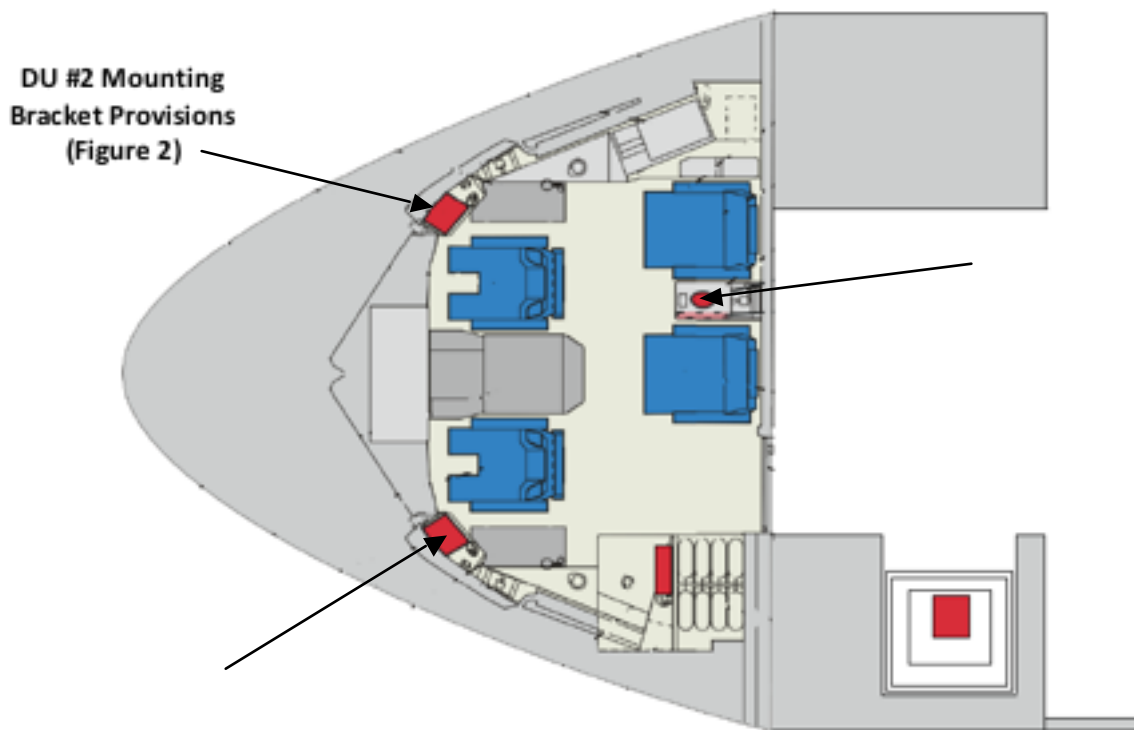
Contact CarlisleIT for usage rights, derivative configurations, and installation lead time (800) 327-9473 • sales@carlisleit.com

PRODUCT DESCRIPTION

- » The installation consists of EFB system mounting provisions for four (4) DUs and four (4) RPUs, which are located in the flight deck or the forward galley

ST02835CH

FAA Supplemental Type Certificate



ELECTRICAL CHANGES

- » No new wires are added and no existing wires are modified or relocated.

ST02835CH

FAA Supplemental Type Certificate

MECHANICAL CHANGES

- » The installation of the captain's side DU mounting brackets is accomplished by installing the brackets into an existing stowage box. The stowage box door, trim, and box liner are removed and the brackets are installed using existing features of the box. No holes will be drilled in the box housing. See Figure 2. The installed bracket has a lower silhouette than the original installation.
- » The installation of the first officer's side DU mounting brackets will be a mirror image of the captain's side.

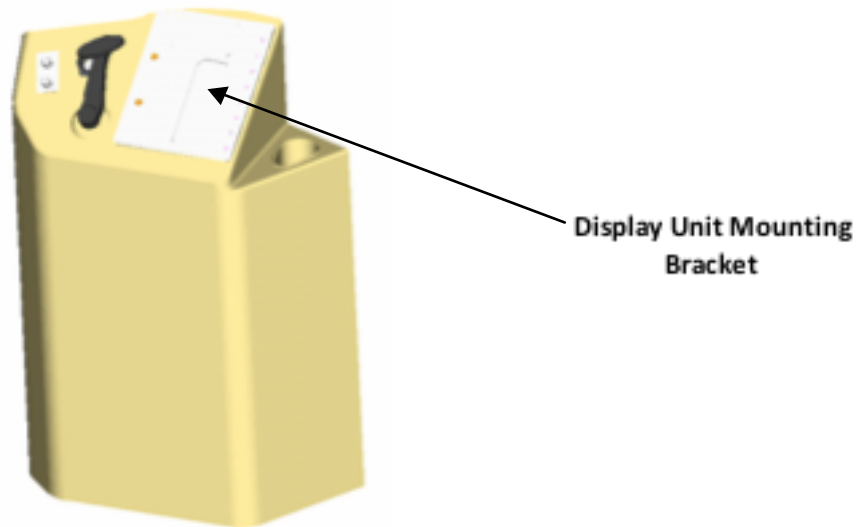


FIGURE 2 - CAPTAIN SIDEWALL - DISPLAY MOUNTING PROVISIONS
(FIRST OFFICER'S INSTALLATION IS MIRROR IMAGE)

- » The installation of an EZMount™ arm and tilt assembly onto the front face of the sliding tray drawer on the center monument located between both observers. The modification will require the drawer front panel to be removed and a replacement will be installed to mount the EZMount™ arm and tilt assembly (see Figure 3).

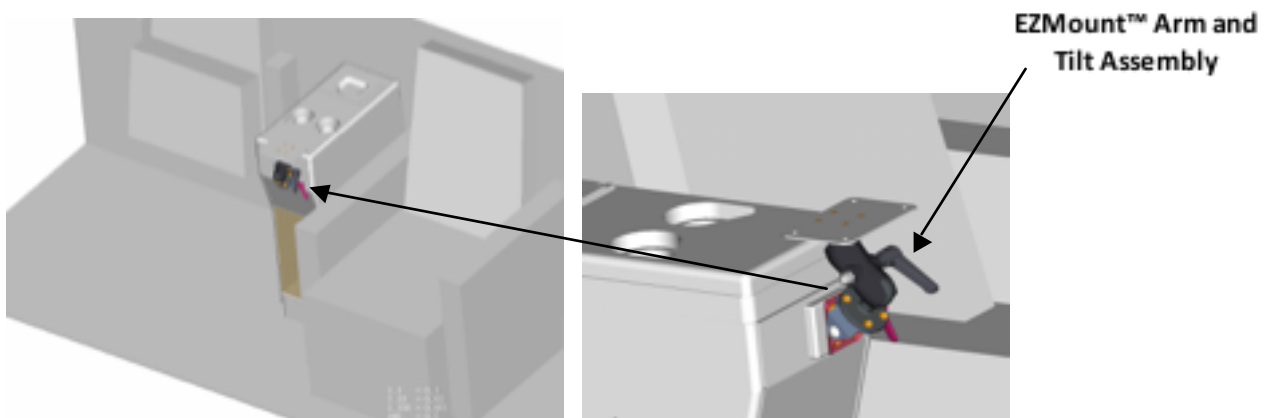


FIGURE 3 - OBSERVERS CENTER MONUMENT WITH EZMOUNT™ ARM AND TILT ASSEMBLY

ST02835CH

FAA Supplemental Type Certificate

- » The installation of a mounting bracket for the future installation of a DU in the top drawer of the VCC located in the forward galley. The modification will require a bracket to be installed on the bottom surface of the top drawer (see Figure 4).

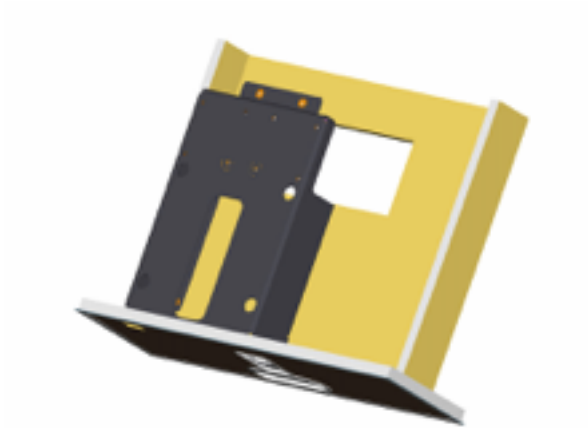


FIGURE 4 - FORWARD GALLEY VCC MONUMENT TOP DRAWER WITH DU BRACKET
(DRAWER REMOVED FROM VCC FOR CLARITY)

- » RPU 1 and 2 will be co-located on the lower forward side of the captain's closet in the cockpit. The modification will require potted inserts to be installed into the honeycomb wall to mount a cover and provisions to install (2) RPUs (see Figure 5).

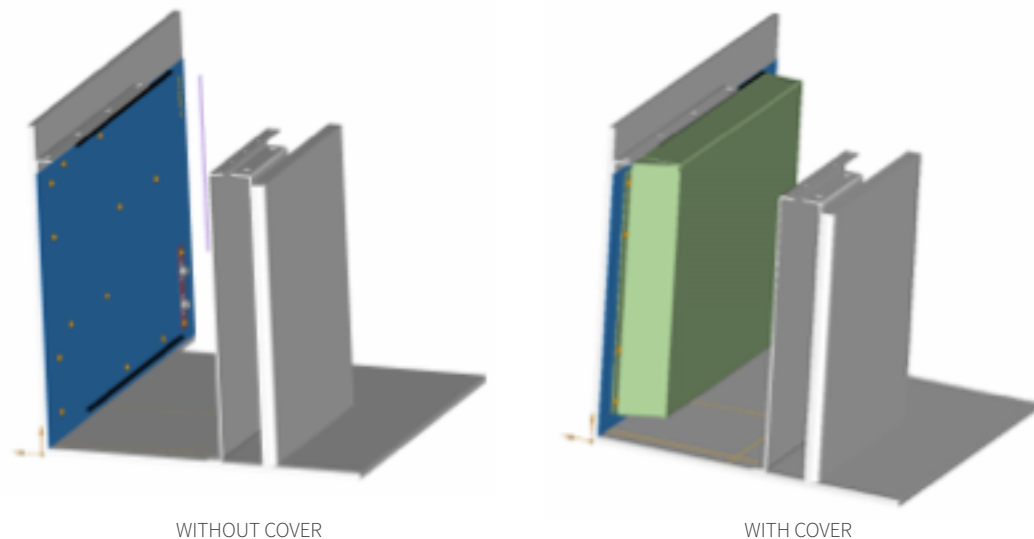


FIGURE 5 - RPU 1 AND 2 PROVISIONAL INSTALLATION

ST02835CH

FAA Supplemental Type Certificate

- » The provisions to mount RPU 3 will be located in the lower compartment of the center monument located between the observer's seats. The modification will require the installation of potted inserts into the wall for the future installation of (1) RPU (see Figure 6).

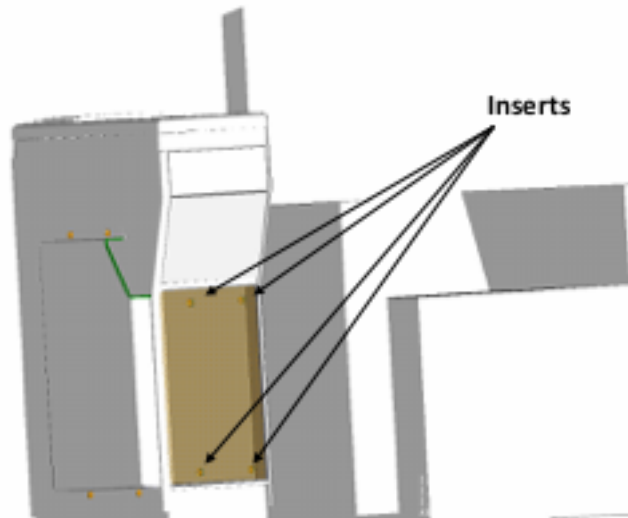


FIGURE 6 - RPU 3 PROVISIONAL POSITION IN THE CENTER MONUMENT

- » The provisions to mount RPU 4 will be located on the fixed top inside surface of the top drawer cavity of the VCC located in the forward galley. The modification will require potted inserts to be installed into the top inside surface of the top drawer cavity to install the mounting brackets for (1) RPU (see Figure 7).

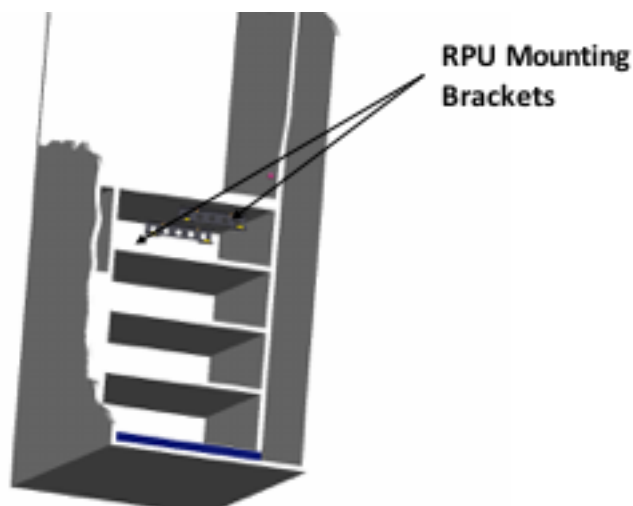


FIGURE 7 - RPU 4 PROVISIONAL POSITION IN THE FORWARD VCC TOP DRAWER (DRAWERS SHOWN REMOVED FOR CLARITY)

CONNECT WITH US TODAY

See CarlisleIT's line of **Certification Services** at:
CarlisleIT.com/services/certification-stc-engineering

(+1) 904-494-0549
Sales@CarlisleIT.com