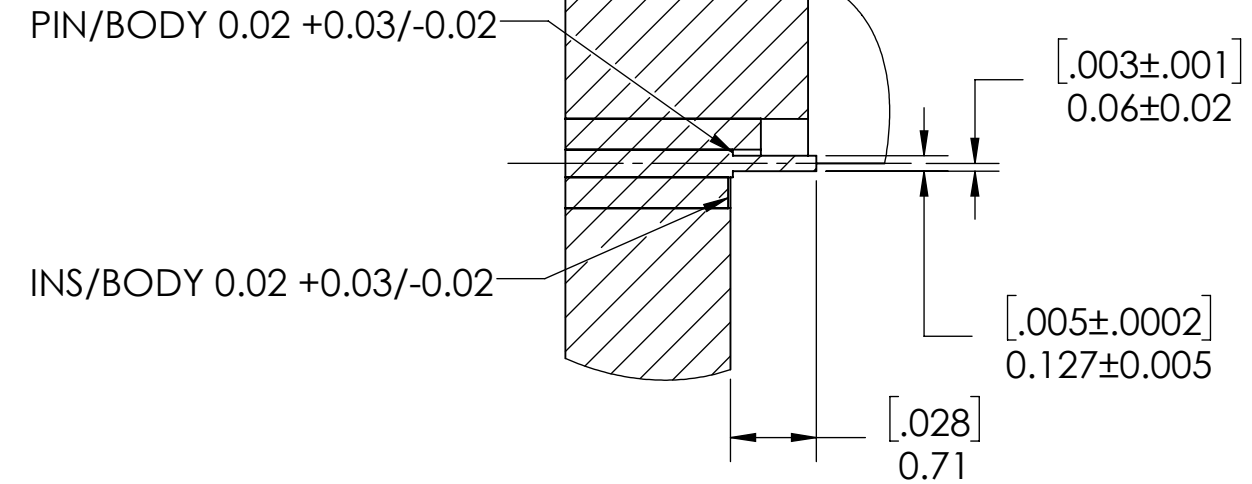
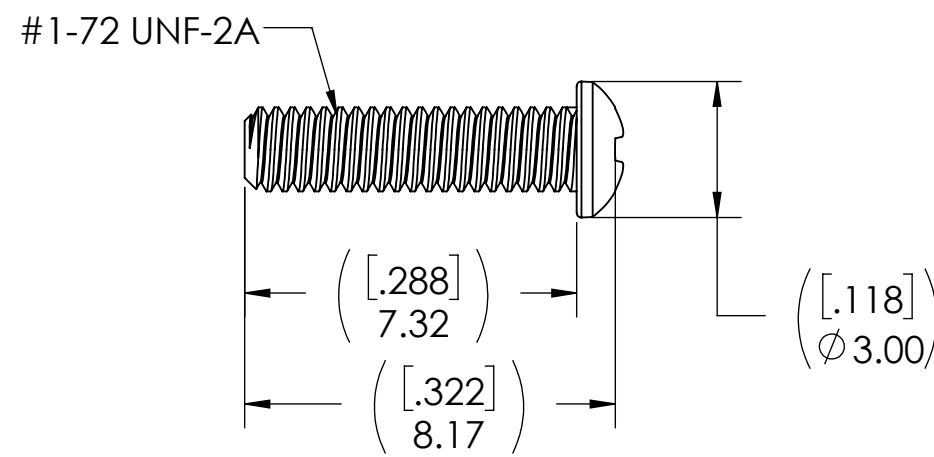
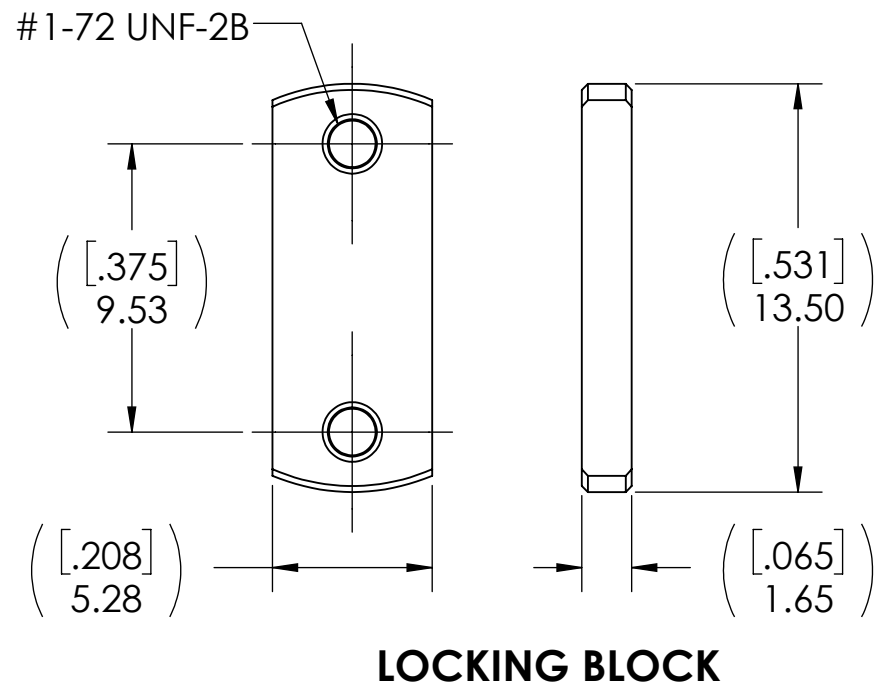
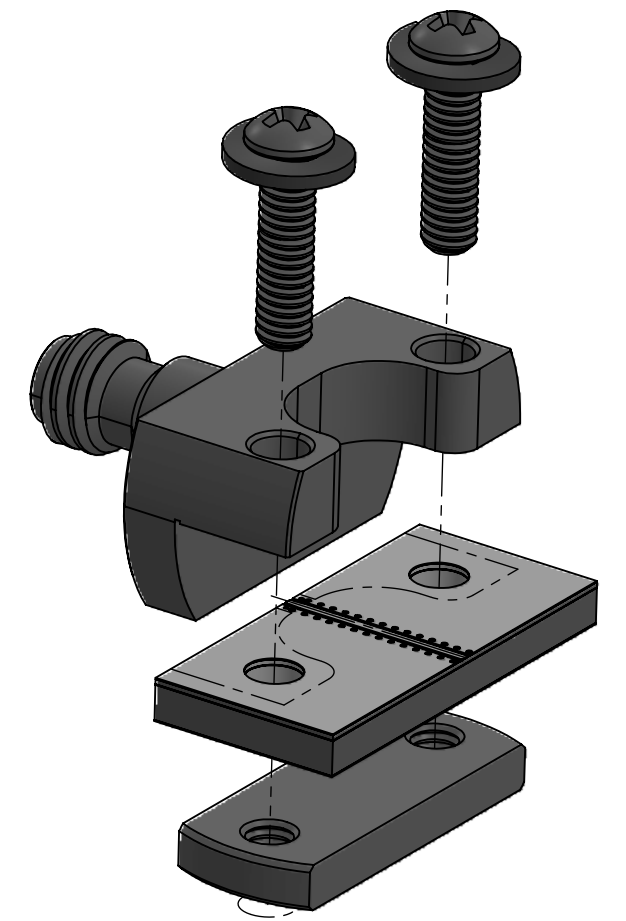
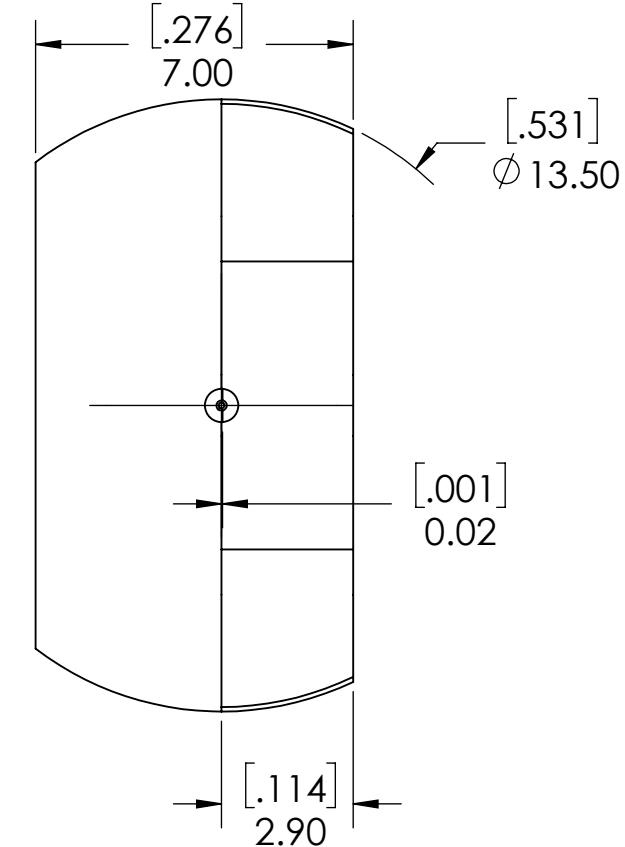
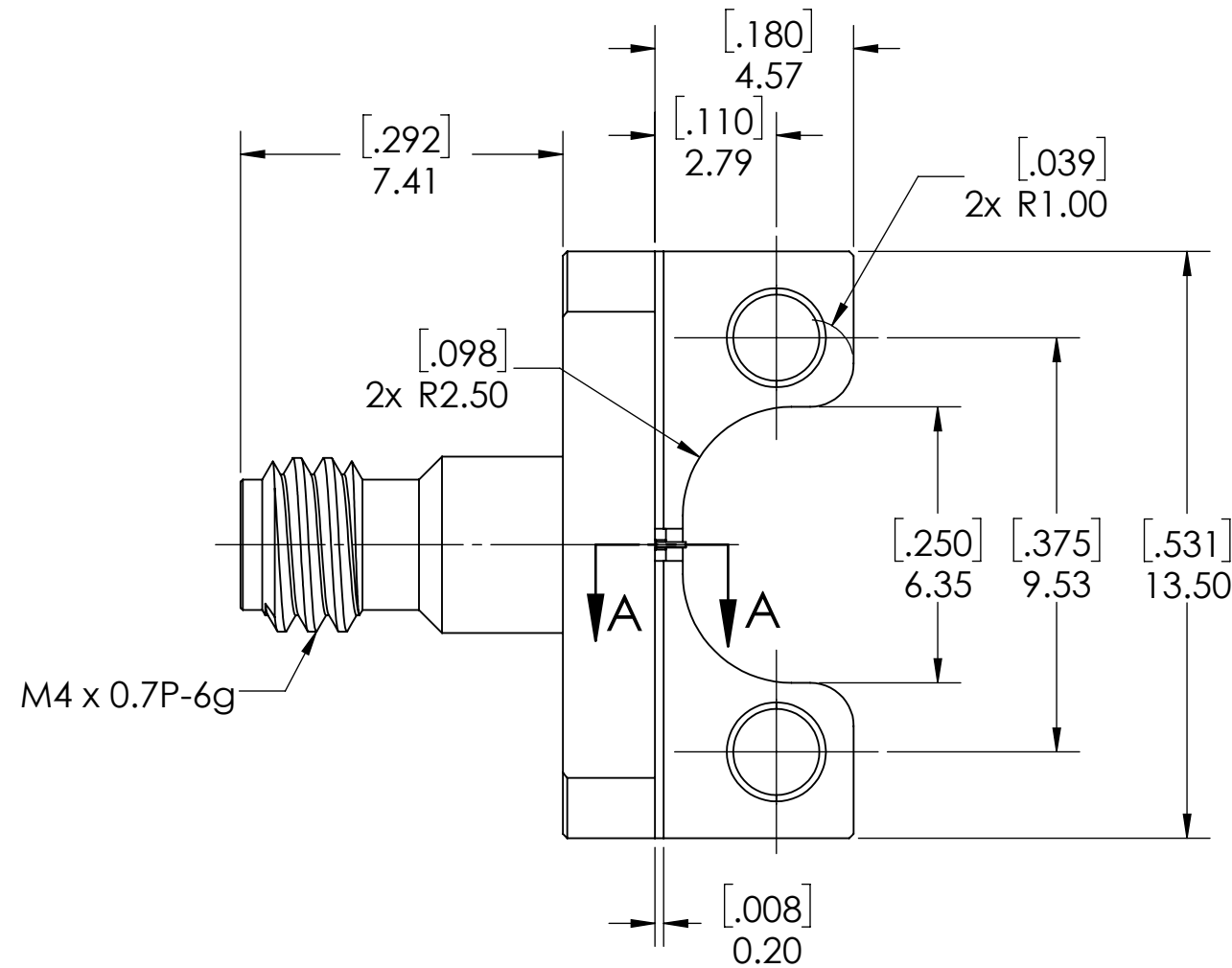
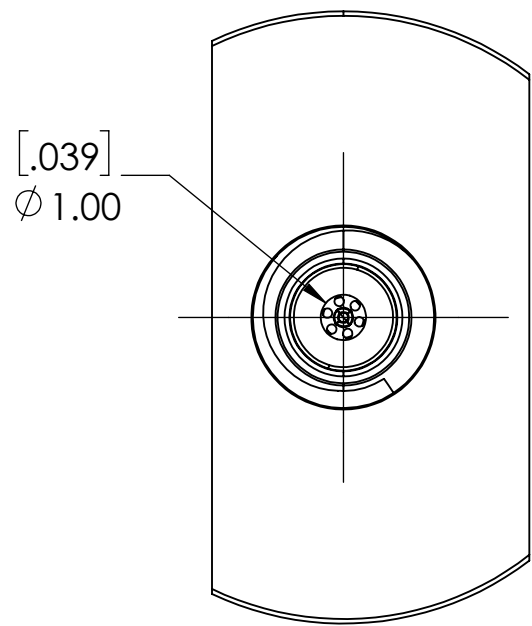




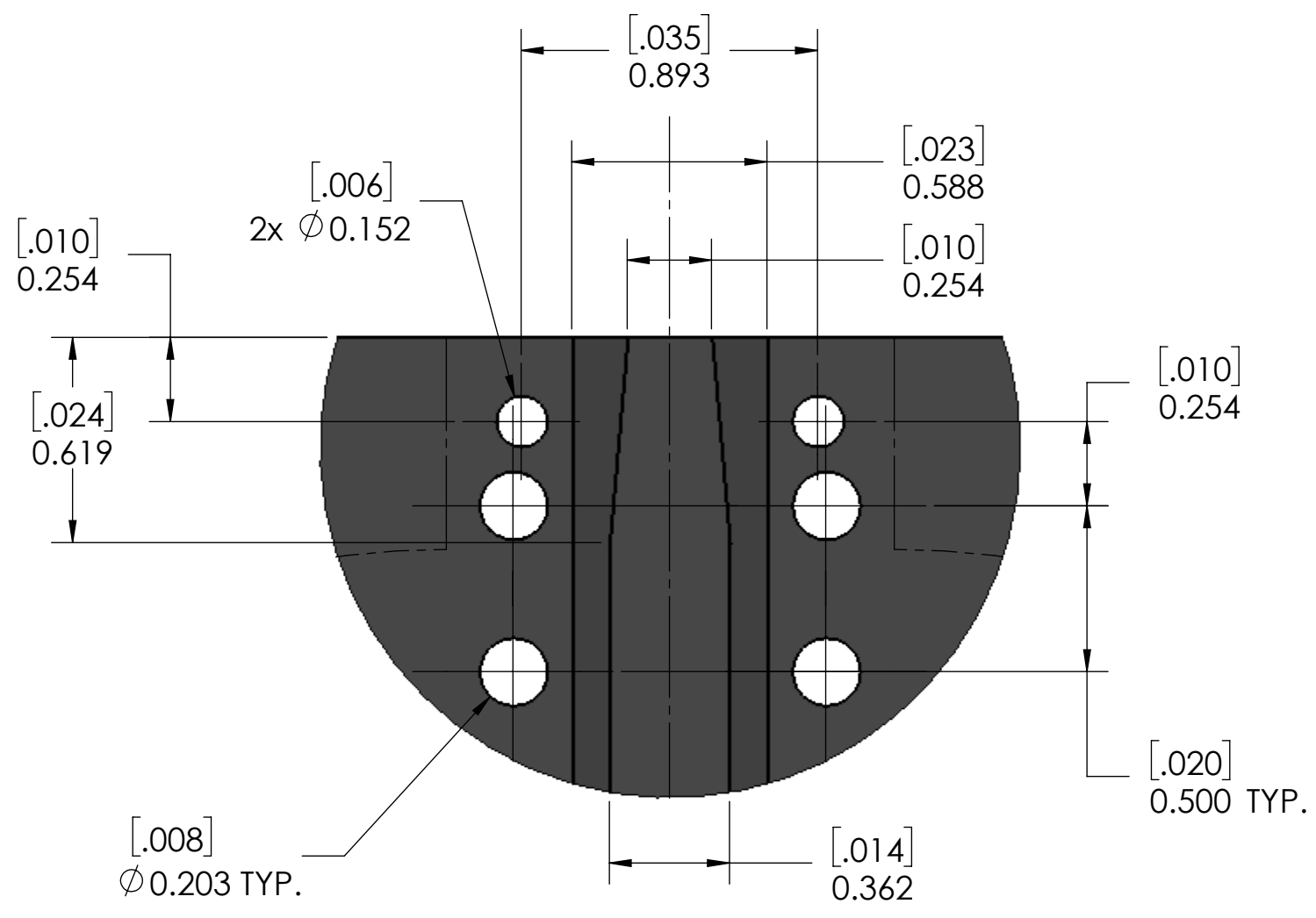
REVISIONS			
REV.	DESCRIPTION	DATE	APPROVED
-	INITIAL RELEASE	12.11.19	PV
A	RELEMINARY RELEASED	19.Mar.21	FY
B	ADD DIMENSION 0.06	2.Sep.21	FY
C	REVISED DIMENSIONS IN SECTION A VIEW	7.Sep.21	JZ
D	ADD MOUNTING SCREWS INFO TO TABLE	15.Sep.21	JZ



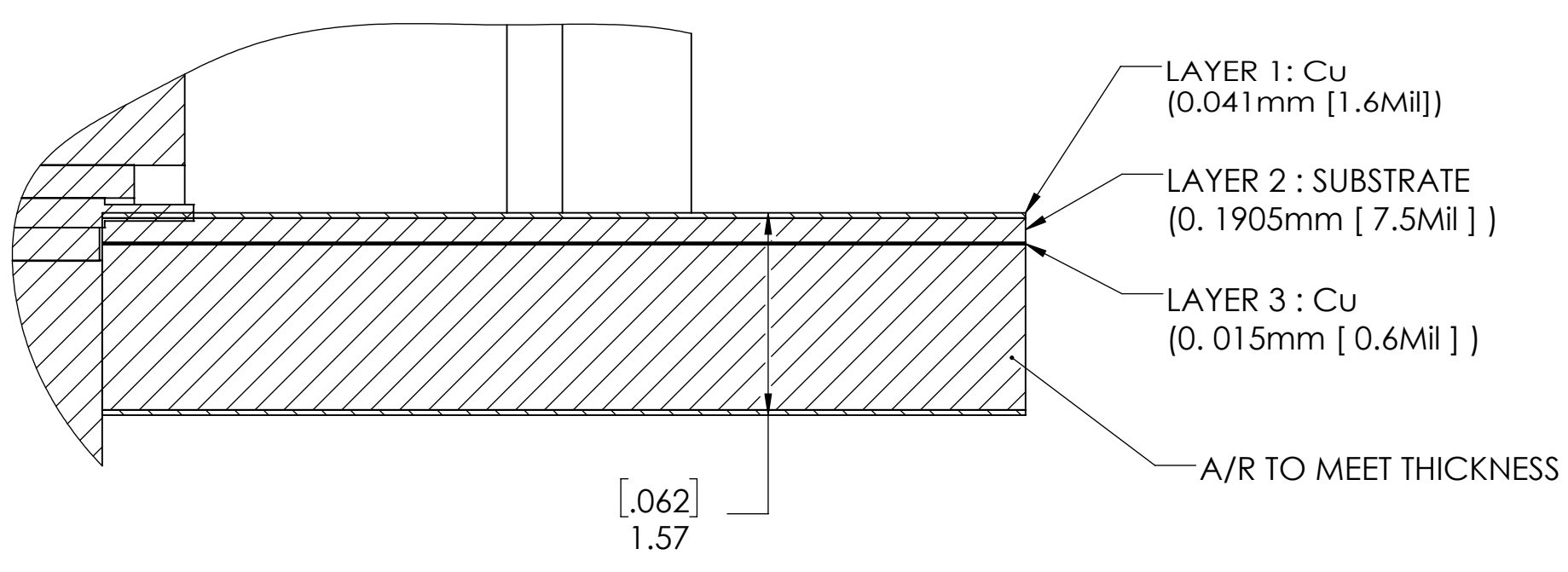
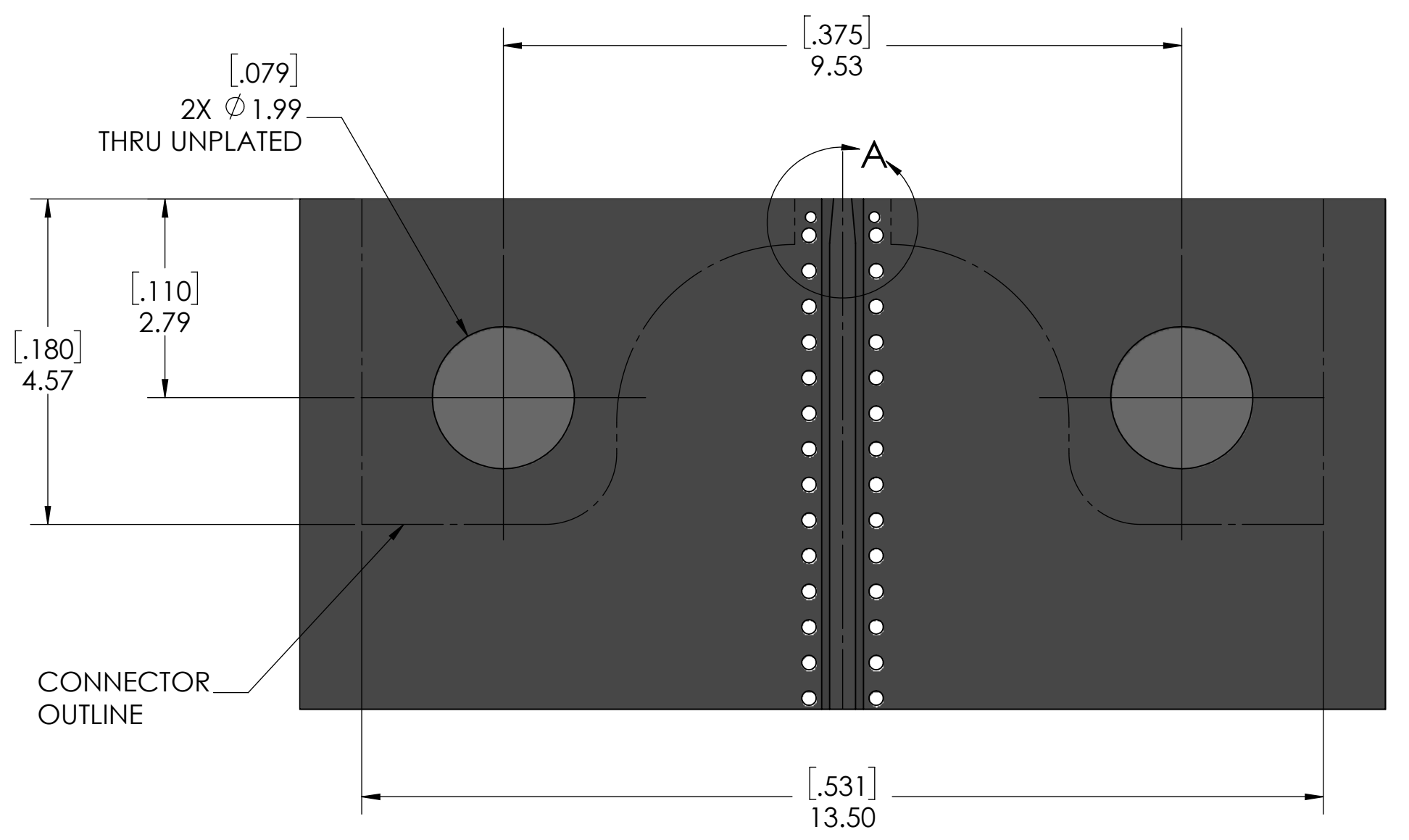
NOTE(S):
 1. These characteristics are typical and for reference.
 2. See sheet 2 for PCB definition .

MATERIAL(S) :	ELECTRICAL(S) :	MECHANICAL(S) :	ENVIRONMENTAL(S) :
Body: Stainless Steel Center Conductor: Beryllium Copper Insulator: Insulator 1: PCTFE, white Insulator 2: PTFE, white RoHS Compliant Protective Cap: Soft PVC Color: Grey Mounting Screws: Stainless Steel	Impedence: 50 Ohms Nominal Frequency Range: DC to 110 GHz VSWR: 1.5:1 max at 110 GHz IL: 1.26dB max AT 110GHz Working Voltage: 400 Vrms max @ Sea Level Dielectric Withstand Voltage: 500 Vrms max. Insulation Resistance: 1000 Megaohms min. Contact Resistance: Center Contact: 4.0 Milliohms max Outer Contact: 0.2 Milliohms max	Mating Characteristics: Interface per MIL-STD-348 Force to Engage & Disengage: Torque: 2 inch-pounds max Longitudinal Force: NA Connector Durability: 500 Cycles min. Permeability: Less than 2.0 mu. Center Contact Retention: Axial Force: 6 pounds min. Radial Force: NA	Temperature Range: -55°C to +165°C Moisture Resistance: MIL-STD-202, Method 103, Test Condition B Corrosion: MIL-STD-202, Method 101, Test Condition B Vibration: MIL-STD-202, Method 204, Test Condition A Shock: MIL-STD-202, Method 213, Test Condition 1

FINISH(ES) :	APPLICABLE CARLISLE IT DOCUMENTS	TOLERANCES AND NOTES	APPROVAL	INITIALS	DATE																								
Body: Passivated Center Conductor: Gold Plating Mounting Screws: Passivated	<table border="1"> <thead> <tr> <th>WORK STANDARD</th> <th>PROD INSTRUC</th> <th>ASSY INSTRUC</th> </tr> </thead> <tbody> <tr> <td>NA</td> <td>NA</td> <td>NA</td> </tr> </tbody> </table>	WORK STANDARD	PROD INSTRUC	ASSY INSTRUC	NA	NA	NA	EXCEPT AS NOTED THIRD ANGLE PROJECTION SCALE 5:1 DIMENSIONS ARE IN [INCHES] MM ANGLES ±2° .XX DECIMALS ±.063 .XXX DECIMALS ±.01	DRAWN BY: PV CHECKED BY: DESIGN ENG: APPR BY:	PV	12.11.19																		
WORK STANDARD	PROD INSTRUC	ASSY INSTRUC																											
NA	NA	NA																											
<table border="1"> <tr> <td colspan="2">CARLISLE</td> <td colspan="2">INTERCONNECT TECHNOLOGIES</td> <td colspan="2">Dongguan City, Guangdong P.R. China 523533</td> </tr> <tr> <td colspan="6">TITLE: 1.00mm STRAIGHT JACK, EDGE MOUNT (SOLDERLESS)</td> </tr> <tr> <td>SCALE: 5:1</td> <td colspan="2">SUB-DIRECTORY/OUTLINE/</td> <td colspan="2">SHEET 1 OF 1</td> <td>REV. D</td> </tr> <tr> <td>SIZE: C</td> <td colspan="2">DRAWING NO. TMB-E1F2-1L1</td> <td colspan="3"></td> </tr> </table>						CARLISLE		INTERCONNECT TECHNOLOGIES		Dongguan City, Guangdong P.R. China 523533		TITLE: 1.00mm STRAIGHT JACK, EDGE MOUNT (SOLDERLESS)						SCALE: 5:1	SUB-DIRECTORY/OUTLINE/		SHEET 1 OF 1		REV. D	SIZE: C	DRAWING NO. TMB-E1F2-1L1				
CARLISLE		INTERCONNECT TECHNOLOGIES		Dongguan City, Guangdong P.R. China 523533																									
TITLE: 1.00mm STRAIGHT JACK, EDGE MOUNT (SOLDERLESS)																													
SCALE: 5:1	SUB-DIRECTORY/OUTLINE/		SHEET 1 OF 1		REV. D																								
SIZE: C	DRAWING NO. TMB-E1F2-1L1																												



DETAIL A
SCALE 50 : 1



**PCB LAYOUT CPW
(FOR REFERENCE ONLY)**

SCALE 10:1	SUB-DIRECTORY/	SHEET 2 OF 2
SIZE C	CAGE CODE	DRAWING NO. TMB-E1F2-1L1
		REV. D