

CONNECTOR PARTS

CENTER CONTACT	CuBe	gold plated
OUTER CONTACT PCB SIDE	CuBe or equiv.	gold plated
OUTER CONTACT RPC-1.85 SIDE	CuBe or equiv.	gold plated
DIELECTRIC	PEEK / PTFE	

ELECTRICAL DATA

IMPEDANCE	50Ω
FREQUENCY	DC TO 50 GHz
RETURN LOSS	≥ 21 dB, DC TO 26.5 GHz ≥ 19 dB, 26.5 TO 40 GHz ≥ 17 dB, 40 TO 50 GHz

INSERTION LOSS	≤ 0.05 X SQR RT f(GHz) dB
INSULATION RESISTANCE	≥ 5 GΩ
TEST VOLTAGE	500 V rms
WORKING VOLTAGE	150 V rms

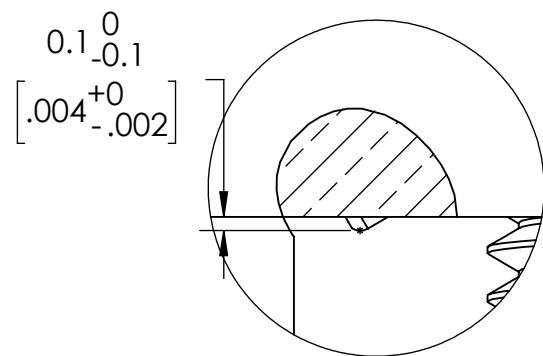
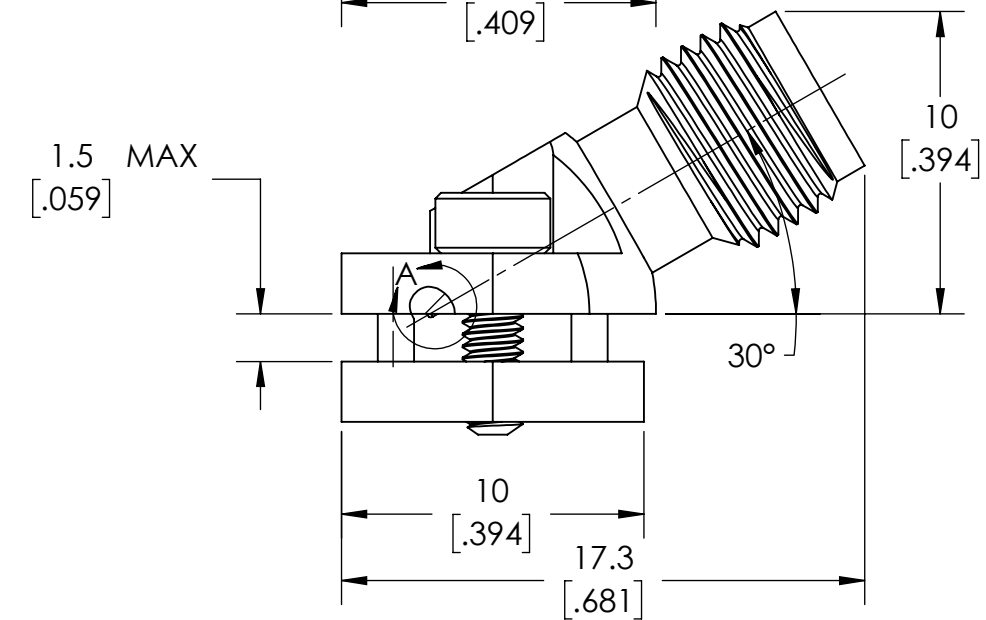
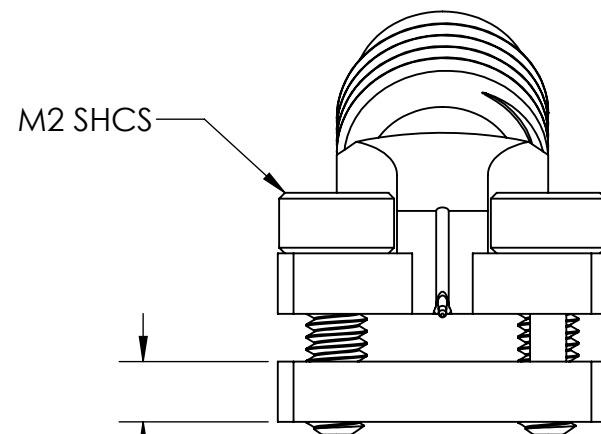
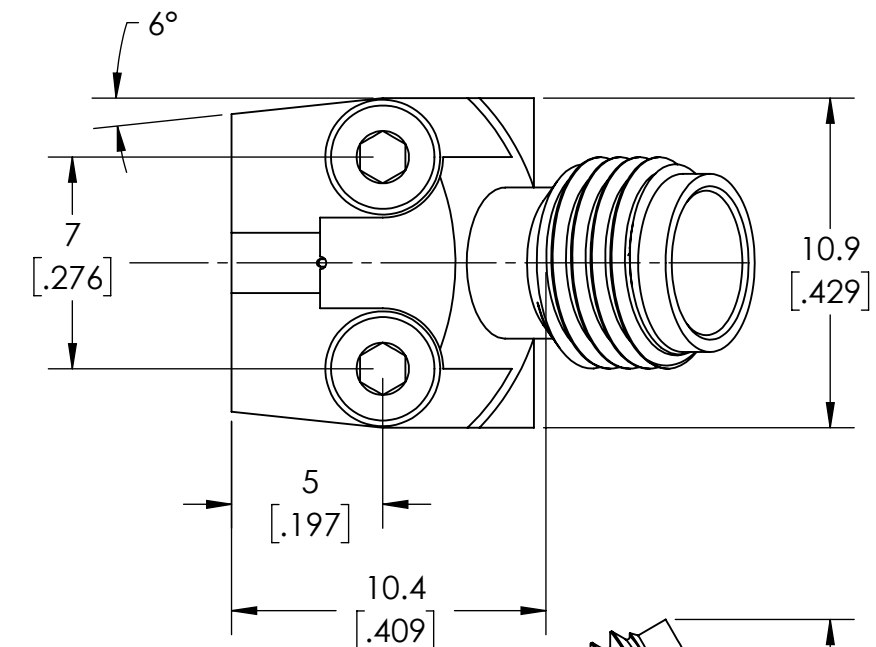
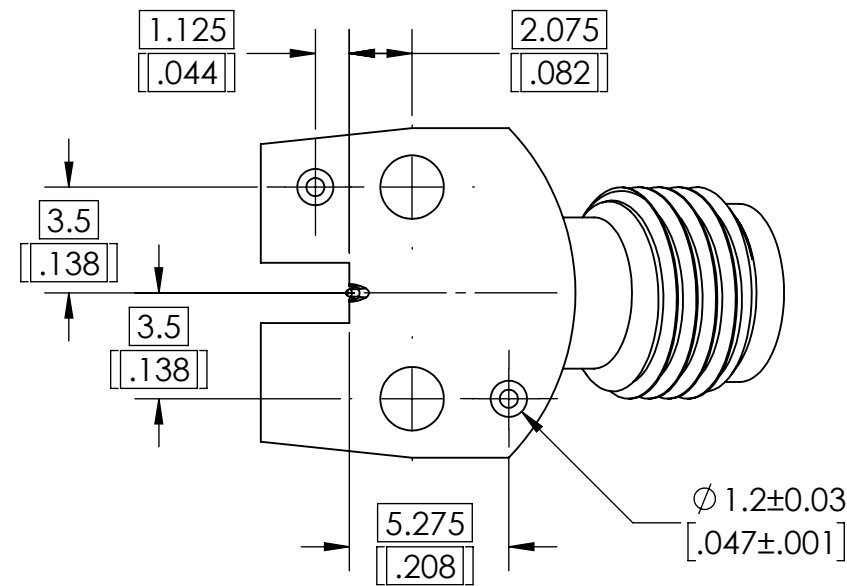
MECHANICAL DATA

MATING CYCLES PCB SIDE	≥300
MATING CYCLES RPC-1.85 SIDE	≥500
COUPLING TEST RPC-1.85	1.65 Nm
RECOMMENDED TORQUE ALLEN SCREW 1.5	0.20 Nm TO 0.30 Nm
PCB THICKNESS MAX.	1.5 mm TYPICAL; DIMENSION EXPANDABLE WITH LONGER SCREWS

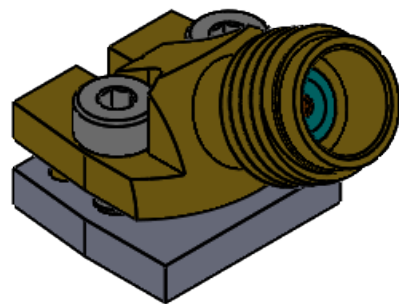
ENVIRONMENTAL DATA

TEMPERATURE RANGE	-40° C TO +85° C
THERMAL SHOCK	IEC 61169-1, SUBCLAUSE 9.4.4
CORROSION	IEC 61169-1, SUBCLAUSE 9.4.6
VIBRATION	IEC 61169-1, SUBCLAUSE 9.3.3
SHOCK	IEC 61169-1, SUBCLAUSE 9.3.14
MOISTURE RESISTANCE	IEC 61169-1, SUBCLAUSE 9.4.3
MAX SOLDERING TEMP	N/A (CONNECTOR IS ONLY SCREWED DOWN)
RoHS	COMPLIANT

REVISION HISTORY					
ECO	REV.	DESCRIPTION	DRAWN BY	APPROVAL	DATE
	00	INITIAL RELEASE	R BEDIENT	E SOUBH	11/17/2020

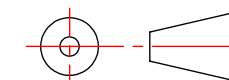


DETAIL A
SCALE 16:1



DIMENSIONS ARE IN INCHES/MILLIMETERS ± TOLERANCES UNLESS OTHERWISE NOTED			
.XXX	.XXXX	ANGLE	FRACTIONS
0.003" [.076mm]	0.0005" [.013mm]	0.5	
NEXT ASSY.		USED ON	
APPLICATION			

THIRD ANGLE PROJECTION



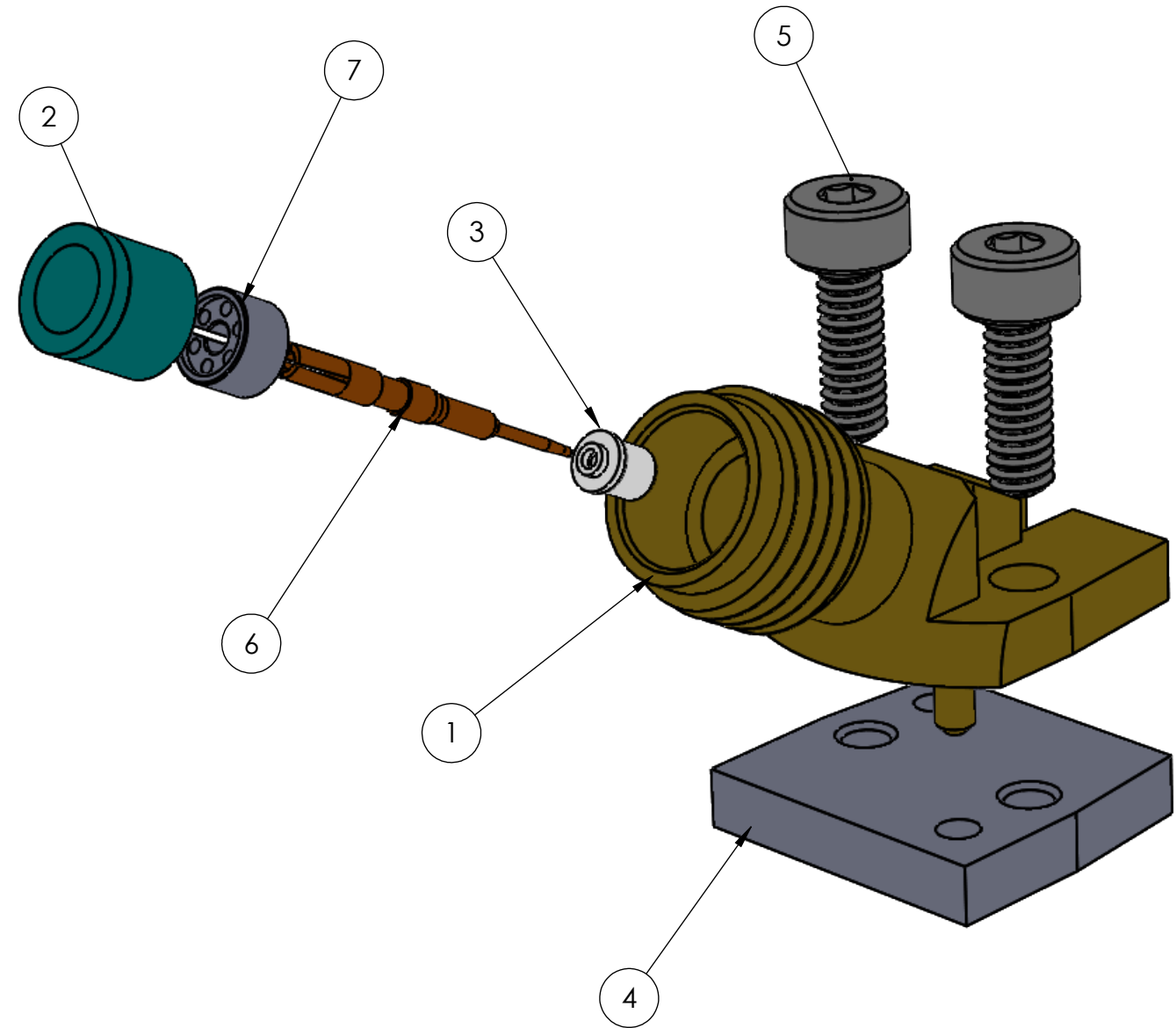
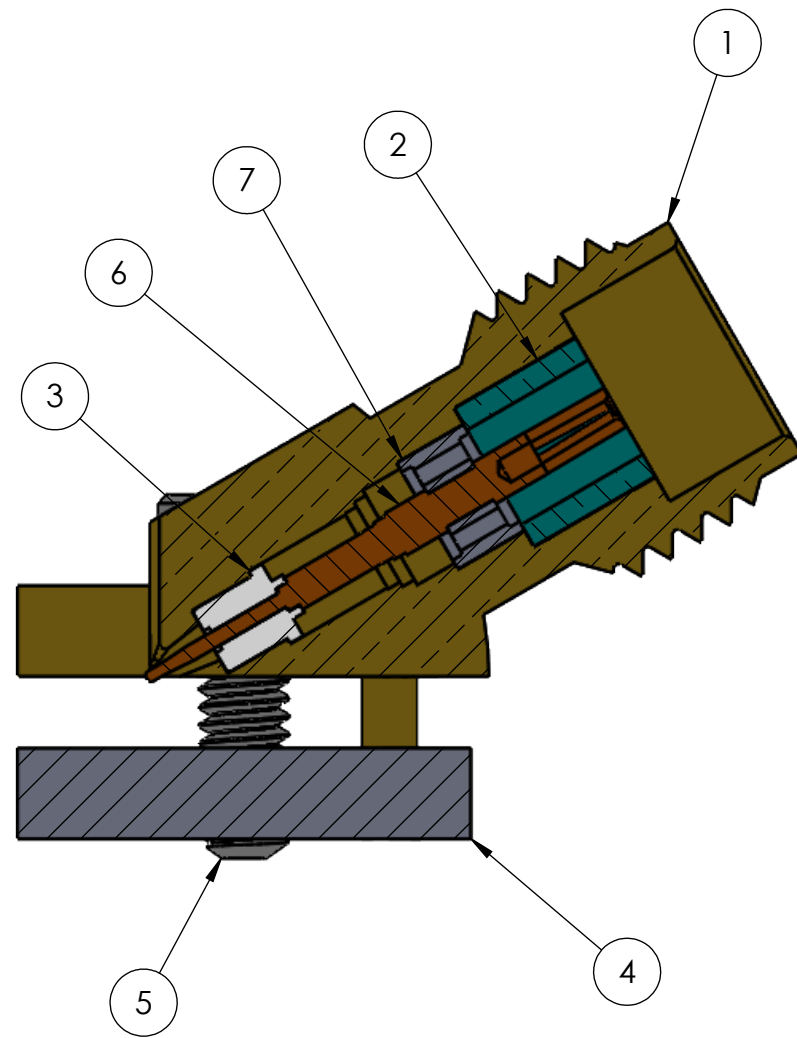
DESIGN ENGR:	R BEDIENT	11/17/2020
DESIGNED BY:	R BEDIENT	11/17/2020
PRODUCT:		
QUALITY:		
MFG:		



TITLE			
2.40 ANGLED CONNECTOR, JACK			
SIZE	CAGE CODE	CARLISLE NUMBER	REV
B	7M294	TM14-0143-00	00
SCALE: 4:1		DO NOT SCALE DRAWING	
		1 OF 4	

THE INFORMATION CONTAINED HEREIN IS PROPRIETARY TO CARLISLE, INC. AND SHALL IN NO WAY BE REPRODUCED OR DISCLOSED IN WHOLE OR IN PART OR USED FOR ANY DESIGN OR MANUFACTURE EXCEPT WHEN SUCH USER POSSESSES DIRECT, WRITTEN AUTHORIZATION FROM CARLISLE, INC.



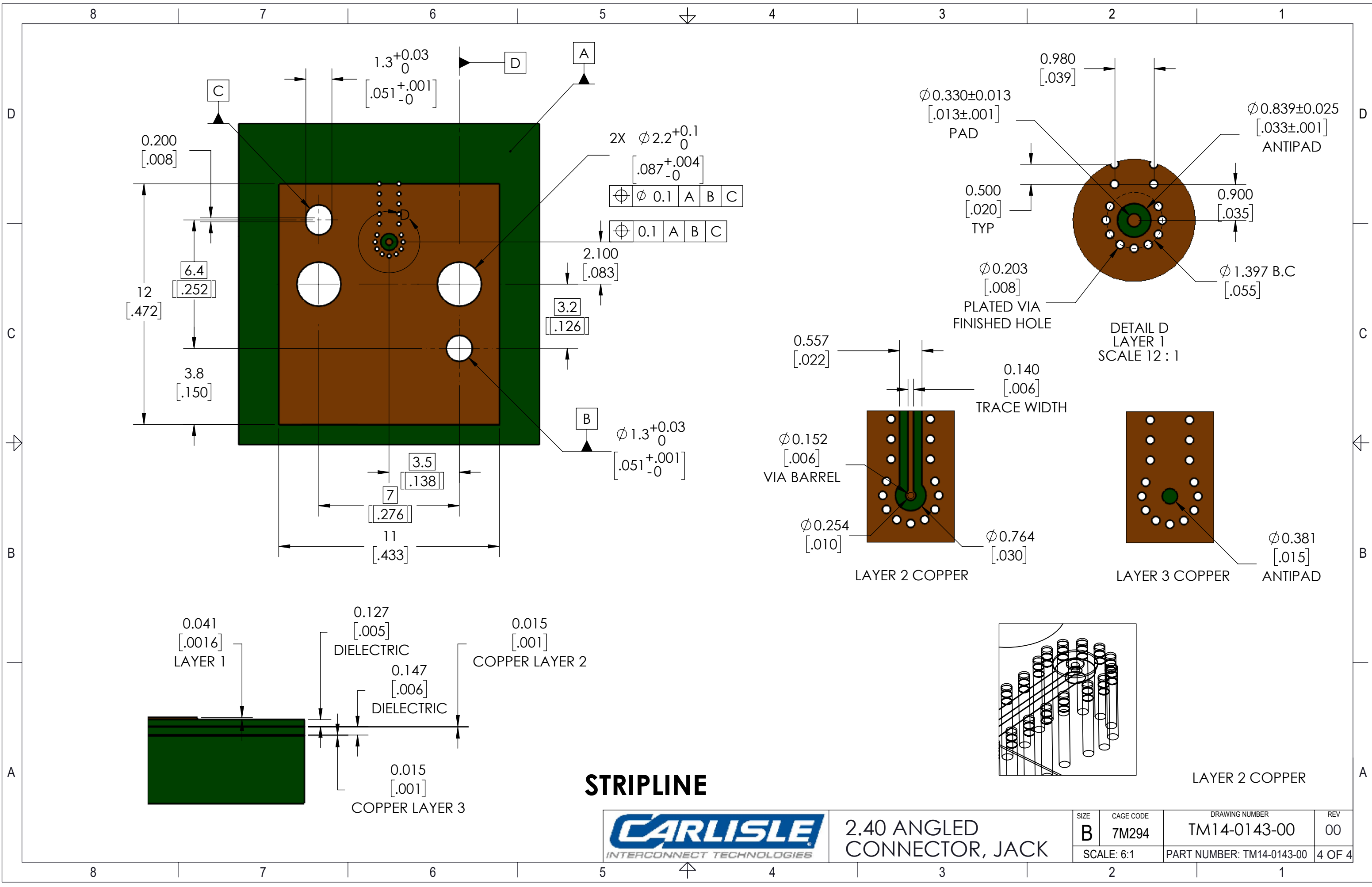


7	TM11-0568-00	INSULATOR, PTFE, ANGLED CONN. 2.40	1
6	TM11-0571-00	CENTER SOCKET, 2.40 ANGLED CONN.	1
5	92290A013	M2x0.4 x 6mm SHCS	2
4	TM11-0355-00	ANGLED CONN, CLAMP PLATE	1
3	TM11-0352-00	1.85 ANGLED CONN, INSULATOR, PEEK	1
2	TM11-0566-00	INSERT, INSULATOR RETAINER 2.40	1
1	TM11-0564-00	ANGLED CONN BODY, 2.40	1
ITEM NO.	PartNo	DESCRIPTION	QTY.



2.40 ANGLED CONNECTOR, JACK

SIZE B	CAGE CODE 7M294	DRAWING NUMBER TM14-0143-00	REV 00
SCALE: 6:1		PART NUMBER: TM14-0143-00	
		2 OF 4	



STRIPLINE



2.40 ANGLED CONNECTOR, JACK

SIZE B	CAGE CODE 7M294	DRAWING NUMBER TM14-0143-00	REV 00
SCALE: 6:1		PART NUMBER: TM14-0143-00	4 OF 4