



HDMI 2.0 Locking Cable Assemblies

THE FUTURE OF CONNECTIVITY



Carlisle Interconnect Technologies (CarlisleIT) offers the latest in high-performance HDMI 2.0 cable assemblies for aircraft cabin management. Fully qualified to support 4K ultra high-definition displays at 60 Hz, these cable assemblies are made to order in customer-specified lengths. In addition, cables can be configured with or without locking accessories to secure against vibration and ensure reliable performance in an aircraft cabin environment.

CarlisleIT also offers:

- » Single-end terminated cables
- » Separate connector kits to handle challenging installation locations and routing
- » Completely custom assemblies with special labeling
- » Additional protective sleeving
- » Color coding and other unique features (available upon request)

Our application engineering team is always ready to help design the perfect cable for your application.

» Learn more: CarlisleIT.com/prod-info/hdmi-dvi-and-coax-digital-video-assemblies/

FEATURES	BENEFITS
HDMI 2.0 compliant	• Supports HD and UHD displays
4K UHD at 60 Hz	• Crisp high-resolution performance
Anti-vibration locking features	• Maintain connections through take-offs, landings, and turbulence
Single-end termination available	• Makes routing cables through tight spaces easier
FAR 25 flammability approved	• Aviation-grade self-extinguishing cables
Easy field termination	• Permits flexible installation options

HDMI 2.0 Locking Cable Assemblies

Basic Part Number	3-Digit Length in Inches	U Indicates Single-End Termination Only (Optional)	Description
600-105799	-XXX	U	HDMI 2.0 Cable Assembly (Standard)
600-107280	-XXX	U	HDMI 2.0 Cable Assembly (w/ Locking Brackets)

Examples:

600-105799-028U - HDMI 2.0 Cable Assembly, 28 Inches, Single-End Terminated

600-107280-032 - HDMI 2.0 Cable Assembly w/ Locking Brackets, 32 Inches, Fully Terminated

Basic Part Number	Description
120-107605-101	HDMI 2.0 Connector & Termination Kit
120-107605-102	HDMI 2.0 Connector & Termination Kit (w/ Locking Brackets)

Figure 1
600-105799-XXX Cables (Standard):

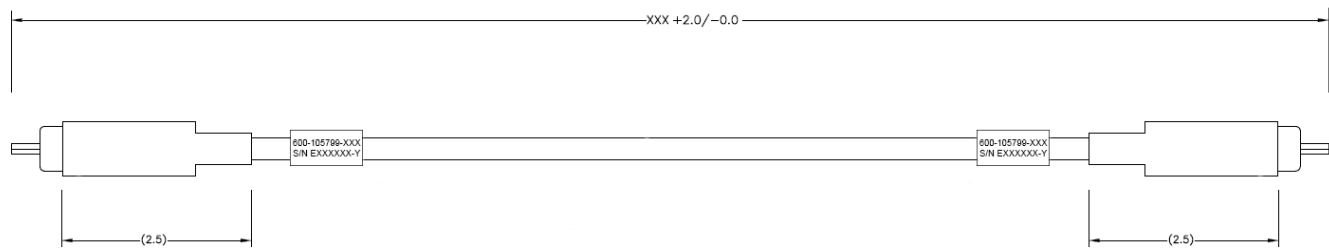


Figure 2
600-107280-XXX Cables (w/ Locking Brackets)

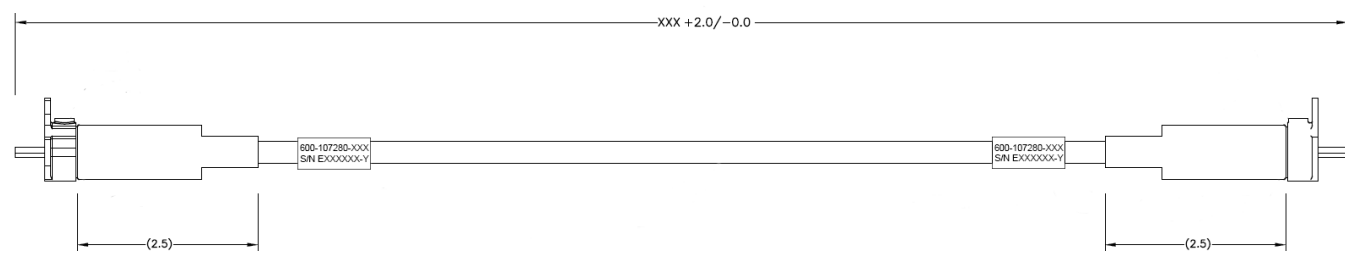
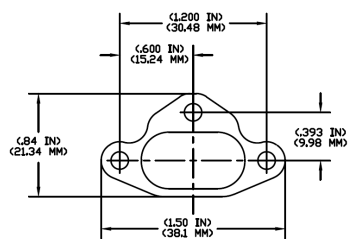


Figure 3
Locking Bracket Detail for 600-107280-XXX Assemblies



See CarlisleIT's line of IFE, Connectivity & Interiors products at:
CarlisleIT.com/prod-info/hdmi-dvi-and-coax-digital-video-assemblies

+1 (414) 421-5300
Sales@CarlisleIT.com