

Compact D-Sub Backshells



INTRODUCTION

Amphenol CIT lightweight series D-Sub Backshells are designed to minimize weight and maximize internal space and EMI shielding. Our D-Sub Backshells are an ideal solution for high-end commercial and aviation cables where weight and/or EMI shielding are critical. The lightweight series D-Sub Backshells also feature a number of unique characteristics that improve the ease of assembly and overall system stability.

KEY CHARACTERISTICS

- » Tapped body style
- » Accommodates conventional and moisture-proof MIL-STD-24308 D-Sub connectors
- » Designed for ease of manufacturing and rework in the field
- » High-precision manufacturing results in a minimal air gap
- » Very effective EMI shielding
- » RoHS and ELV compliant

FEATURES

- » Straight, 45° and 90° exit
- » 60% lighter than comparable industry standard products
- » Compact and efficient design maximizes internal space
- » Front panel mount capability
- » Slots for mounting stability

BENEFITS

- » Special mounting features that maximize cable strain relief strength. This subsequently prevents potential damage to individual wires and electrical contacts.
- » Readily available engineering support for shield termination methods that optimize the mechanical and electrical system performances.
- » Custom designs are available to suit special application requirements such as tight space limitations or bending radii.

Compact D-Sub Backshells

STRAIGHT EXIT ANGLE BACKSHELL



Features

- » Straight cable exit
- » Unique front-panel mount feature
- » Slots for 4-40 screw or tie strap to provide more mounting stability

Ideal Applications

- » Aerospace video and Ethernet
- » EMI protection
- » Weight sensitive

Kit Contents

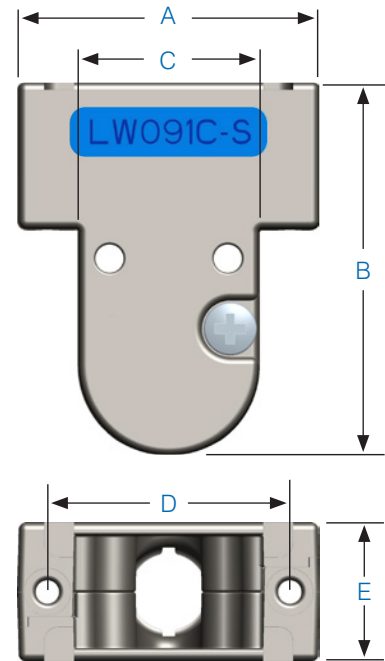
- » 2 shell halves
- » 2 screws (MS51957)

Standard Material

- » Shell - aluminum alloy with electro-less nickel plating
- » 4-40 pan head screws - stainless steel

Optional Material

- » Zinc alloy or metalized plastic
- » Additional plating upon request



Shell Size	Dimensions					Cable DIA (Min-Max)	Weight	Material	P/N
	A	B	C	D	E				
1/E	1.23"	1.5"	0.74"	0.984"	0.56"	0.15" - 0.35"	18 g	Die-Cast Aluminum	LW091C-S
							13.5 g	Composite	LW091P-S
	1.23"	1.247"	0.75"	0.984"	0.58"	0.15" - 0.35"	11 g	Die-Cast Aluminum	LW091C-S-C
2/A	1.55"	1.8"	1"	1.312"	0.58"	0.15" - 0.35"	25 g	Die-Cast Aluminum	LW092C-S
							16 g	Composite	LW092P-S
	1.55"	1.294"	1"	1.312"	0.51"	0.15" - 0.35"	13.5 g	Die-Cast Aluminum	LW092C-S-C
3/B	2.1"	1.8"	1.475"	1.852"	0.58"	0.2" - 0.48"	28.5 g	Die-Cast Aluminum	LW123C-S
							18 g	Composite	LW123P-S
	2.1"	1.279"	1.472"	1.852"	0.58"	0.4" - 0.65"	21 g	Die-Cast Aluminum	LW163C-S-C
4/C	2.75"	2"	2.155"	2.5"	0.58"	0.3" - 0.58"	36 g	Die-Cast Aluminum	LW154C-S
5/D	2.65"	2"	2.085"	2.406"	0.68"	0.4" - 0.65"	38 g	Die-Cast Aluminum	LW165C-S

Notes:
 1. The parts shown in the above table are standard items. Other strain relief diameters can be available upon request.
 2. Parts are packaged unassembled.

Compact D-Sub Backshells

45° EXIT ANGLE BACKSHELL



Features

- » 45° cable exit
- » Unique front-panel mount feature
- » Slots for 4-40 screw or tie strap to provide more mounting stability

Ideal Applications

- » Aerospace video and Ethernet
- » EMI protection
- » Weight sensitive

Kit Contents

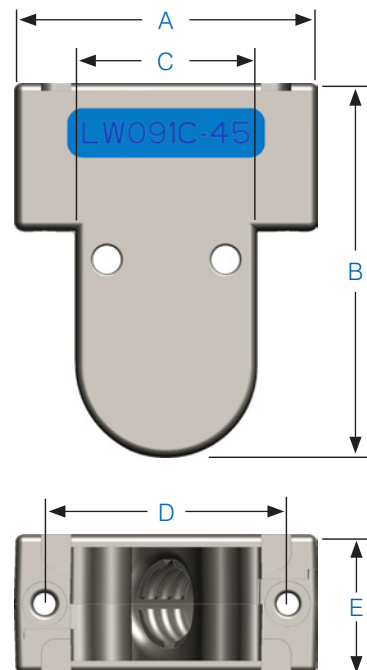
- » 2 shell halves
- » 2 screws (MS51957)

Standard Material

- » Shell - aluminum alloy with electro-less nickel plating
- » 4-40 pan head screws - stainless steel

Optional Material

- » Zinc alloy or metalized plastic
- » Additional plating upon request

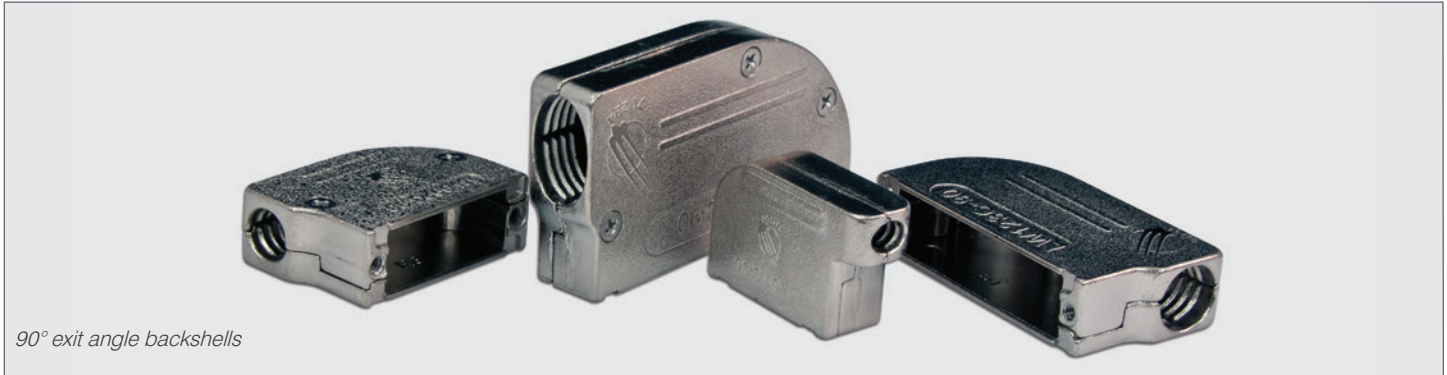


Shell Size	Dimensions					Cable DIA (Min-Max)	Weight	Material	P/N
	A	B	C	D	E				
1/E	1.23"	1.5"	0.75"	0.984"	0.58"	0.15" - 0.35"	17.5 g	Die-Cast Aluminum	LW091C-45
							12.5 g	Composite	LW091P-45
2/A	1.56"	1.5"	1"	1.312"	0.58"	0.15" - 0.35"	15 g	Composite	LW092P-45
							25 g	Die-Cast Aluminum	LW122C-45
3/B	2.1"	1.8"	1.475"	1.852"	0.58"	0.2" - 0.48"	28.5 g	Die-Cast Aluminum	LW123C-45
							18 g	Composite	LW123P-45
4/C	2.75"	2"	2.155"	2.5"	0.58"	0.3" - 0.58"	35 g	Die-Cast Aluminum	LW154C-45
5/D	2.65"	2"	2.085"	2.406"	0.69"	0.4" - 0.65"	38 g	Die-Cast Aluminum	LW165C-45

Notes:
 1. The parts shown in the above table are standard items. Other strain relief diameters can be available upon request.
 2. Parts are packaged unassembled.

Compact D-Sub Backshells

90° EXIT ANGLE BACKSHELL



90° exit angle backshells

Features

- » 90° cable exit

Ideal Applications

- » Aerospace video and Ethernet
- » EMI protection
- » Weight sensitive

Kit Contents

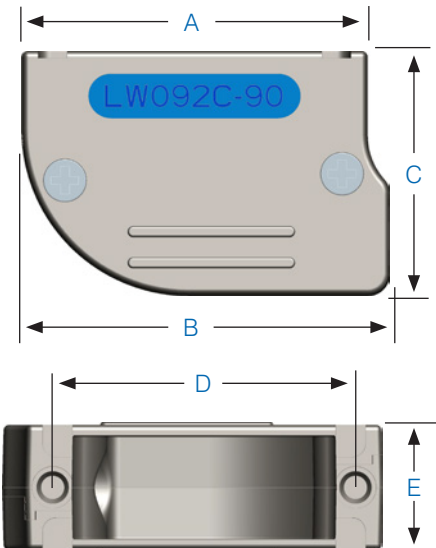
- » 2 shell halves
- » 2 screws

Standard Material

- » Shell - cast aluminum alloy with electro-less nickel plating
- » Flat head screws - stainless steel

Optional Material

- » Zinc alloy or metalized plastic
- » Additional plating upon request



Shell Size	Dimensions					Cable DIA (Min-Max)	Weight	Material	P/N
	A	B	C	D	E				
1/E	1.23"	1.33"	0.95"	0.984"	0.52"	0.15" - 0.35"	13.5 g	Composite	LW091P-90
2/A	1.55"	1.65"	1.1"	1.312"	0.54"	0.15" - 0.35"	15 g	Die-Cast Aluminum	LW092C-90
	1.55"	1.55"	1.1"	1.312"	0.56"	0.2" - 0.48"	10.5 g	Composite	LW122P-60
	1.55"	1.55"	1.1"	1.312"	0.54"	0.2" - 0.48"	14 g	Composite	LW122P-90
3/B	2.1"	2.2"	1.2"	1.852"	0.56"	0.2" - 0.48"	18 g	Die-Cast Aluminum	LW123C-90
							16 g	Composite	LW123P-90
4/C	2.75"	2.84"	1.5"	2.5"	0.54"	0.4" - 0.65"	32 g	Die-Cast Aluminum	LW164C-90
5/D	2.65"	2.75"	1.5"	2.406"	0.68"	0.4" - 0.65"	34 g	Die-Cast Aluminum	LW165C-90*

*Design in development only.

Notes:

1. The parts shown in the above table are standard items unless otherwise noted. Other strain relief diameters are available upon request.
2. Parts are packaged unassembled.