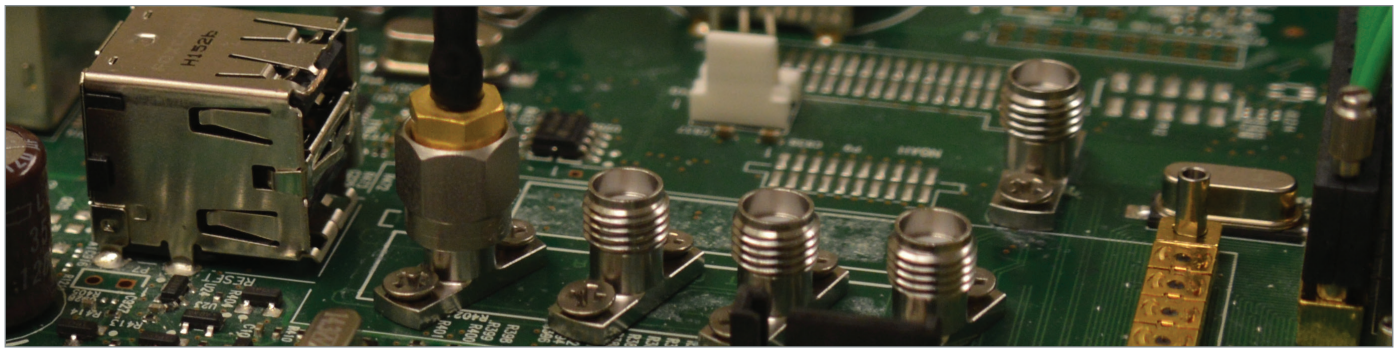


Field Replaceable PCB Connectors



Field replaceable PCB connectors.

WHEN SIGNAL INTEGRITY AND DENSITY MATTERS

Carlisle Interconnect Technologies' (CarlisleIT) Field Replaceable PCB connectors are designed to simplify board trace testing and save time and expense with a solderless installation, eliminating the risk for damaging sensitive equipment. These standard connectors are part of CarlisleIT's full lineup of low cost, customizable interconnect solutions delivering superior signal performance and value.

FEATURES & BENEFITS

| Feature | Benefit |
|--|---|
| DC-65GHz: 3.5mm/34GHz, 2.92mm/40GHz, 2.40mm/50GHz, 1.85mm/65GHz | Multiple interface options cover a wide frequency band, offering standard and readily available stock with testing up to 65GHz |
| Push-on, Standard Threaded and Secure-Thread® stripline configurations | Connector configuration options and cable attachment methods conform to a variety of application needs |
| Solderless design | Elimination of soldering enables fast and easy installation of high performance connectors that can be removed and reused without damaging the board, saving time and reducing cost |

SUGGESTED APPLICATIONS

- » High speed digital systems
- » Vector network analyzer (VNA)
- » Oscilloscope
- » Bit error ratio tests (BERT)
- » Switch matrix
- » Automatic test equipment (ATE)
- » Semiconductors
- » Design validation testing
- » Integrators
- » Military/defense
- » Electronic sensors
- » Radar/guidance systems
- » Communication electronics

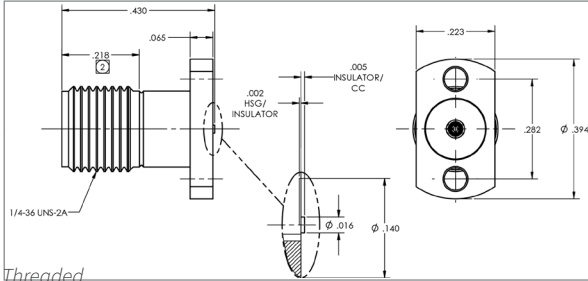
ORDERING INFORMATION

| Threaded | | | | Push On | | Secure-Thread | |
|---|--|--|--|--|---|---|--|
| Part Number | | | | | | | |
| 4-7599-810-10 | 4-K999-810-10 | 4-9099-810-10 | 4-V999-810-10 | 3-R899-816-10 | 3-W899-816-10 | 3-S399-816-10 | 3-W399-816-10 |
| 3.5mm Straight 2 Hole Flange Mount Jack, .020 Pin | 2.92mm Straight 2 Hole Flange Mount Jack, .020 Pin | 2.40mm Straight 2 Hole Flange Mount Jack, .016 Pin | 1.85mm Straight 2 Hole Flange Mount Jack, .016 Pin | SSMP Male, Limited Detent, 4 Hole (In-line) Flange Mount, .030 Pin | WMP Male, Limited Detent, 4 Hole (In-line) Flange Mount, .030 Pin | SSMP Male, Smooth Bore, 4 Hole (In-line) Flange Mount, .030 Pin | WMP Male, Smooth Bore, 4 Hole (In-line) Flange Mount, .030 Pin |
| 34GHz | 40GHz | 50GHz | 67GHz | 40GHz | 50GHz | 40GHz | 50GHz |

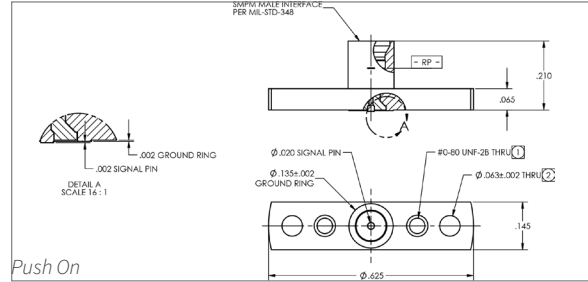
Field Replaceable PCB Connectors

SPECIFICATIONS & PERFORMANCE

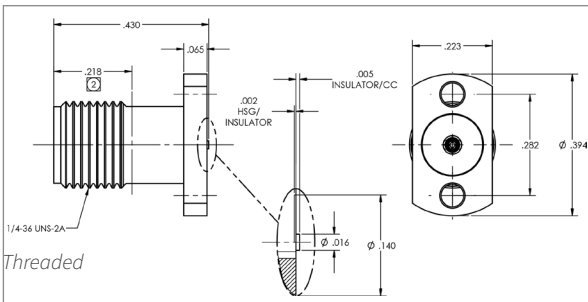
4-7599-810-10 Outline Drawing



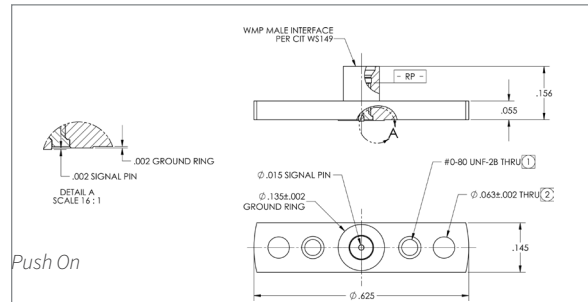
3-R899-816-100 Outline Drawing



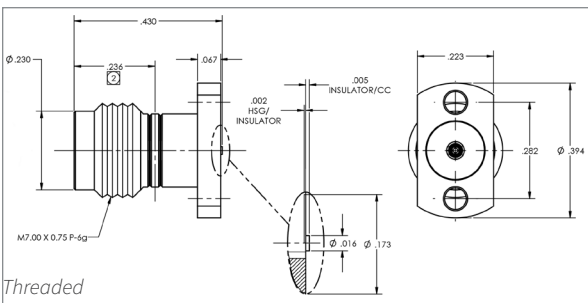
4-K999-810-10 Outline Drawing



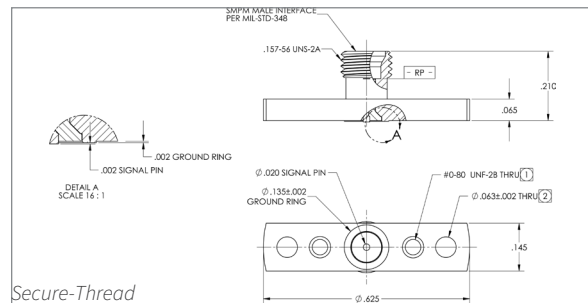
3-W899-816-10 Outline Drawing



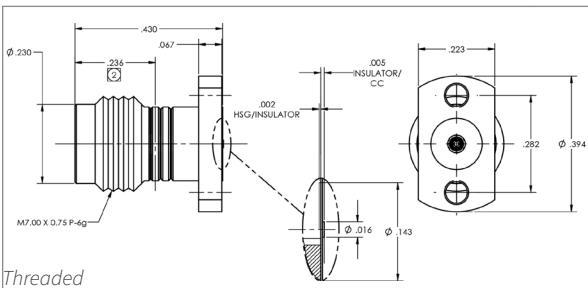
4-9099-810-10 Outline Drawing



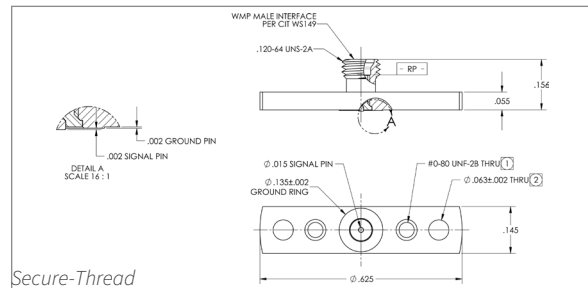
3-S399-816-10 Outline Drawing



4-V999-810-10 Outline Drawing



3-W399-816-10 Outline Drawing



CONNECT WITH US TODAY

See CarlisleIT's line of **Test & Measurement** products at:
CarlisleIT.com/market/test-measurement

(+1) 904-494-0549
Sales@CarlisleIT.com