

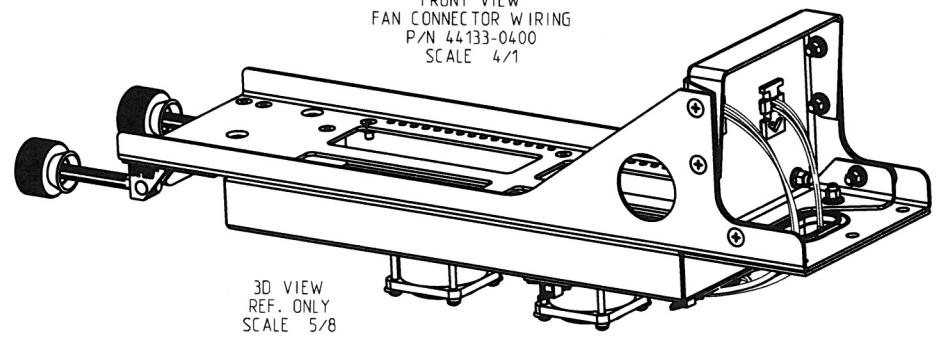
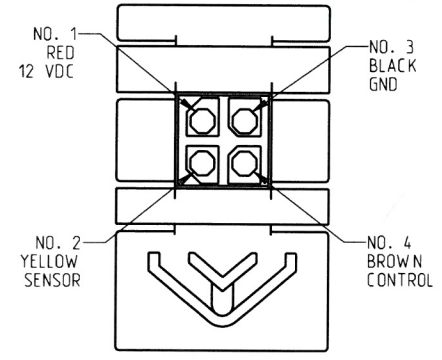
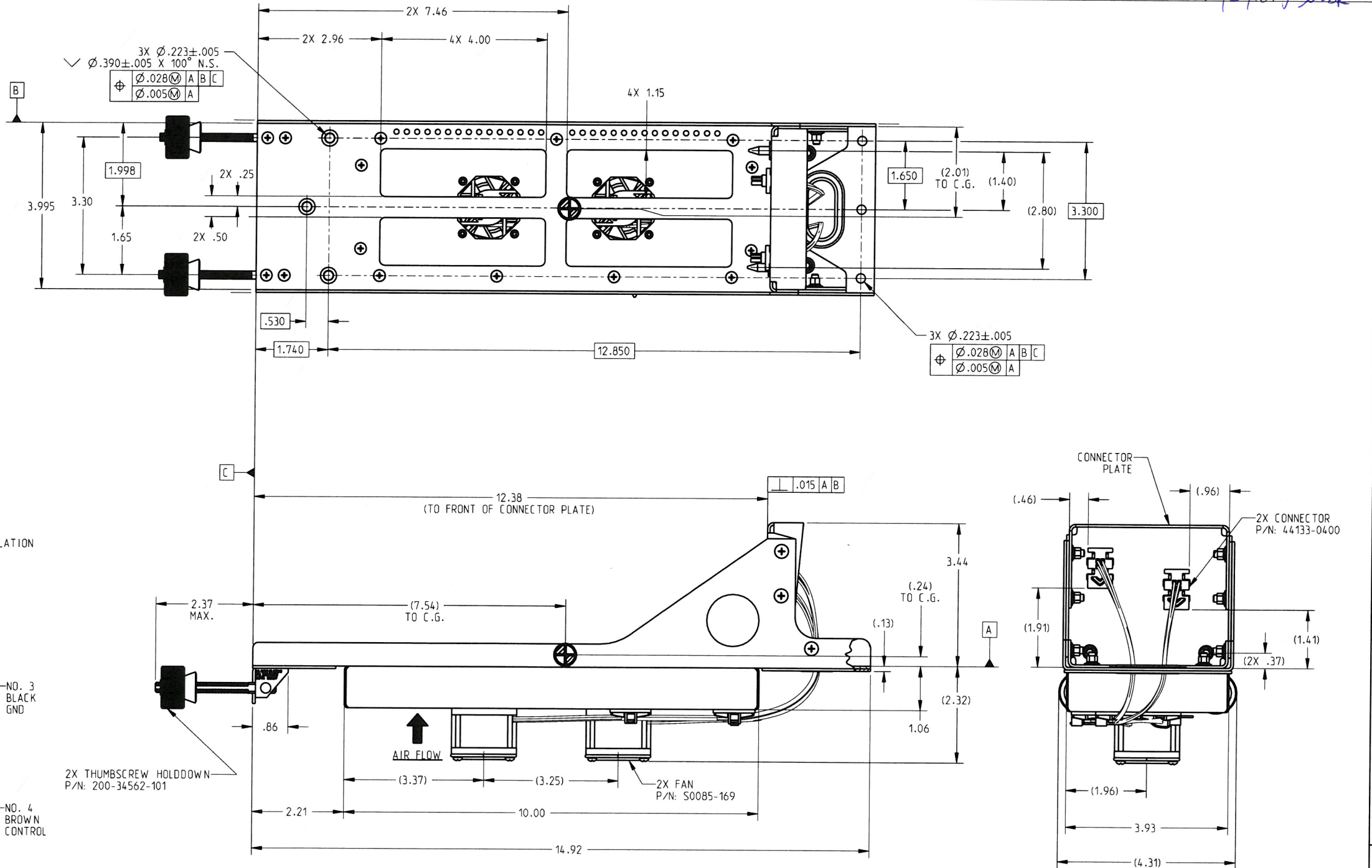
REVISION HISTORY					DATE	APPROVED
ECN	SHT	ZONE	REV	DESCRIPTION		
72521			NC	RELEASED	9/21/18	<i>[Signature]</i>

This print and associated documents and the contained information are the confidential property of CarlisleIT. Disclosure of, and/or reproduction of, all or part thereof or manufacture of any part from information contained on this print not specifically permitted by CarlisleIT in writing is forbidden.

\*\*\*\* EXPORT CONTROLLED DOCUMENT - EAR \*\*\*\*  
The information in this document is subject to the Export Controls in Accordance with the Export Administration Regulations. Diversion Contrary to U.S. Law is prohibited.

- NOTES: UNLESS OTHERWISE SPECIFIED**
- DIMENSIONS AND TOLERANCES PER ASME Y14.5M-1994.
  - DESIGNED TO MEET THE APPLICABLE REQUIREMENTS OF THE FOLLOWING:
    - A. RTCA/DO-160G ENVIRONMENTAL TEST CONDITIONS:
      - TEMPERATURE: CAT F2
      - ALTITUDE: CAT F2
      - TEMP VARIATION: CAT B
      - HUMIDITY: CAT B
      - OPERATIONAL SHOCK: CAT B
      - CRASH SAFETY: CAT B
      - VIBRATION: CAT S, CURVES C, L, M AND Y
      - EXPLOSION PROOFNESS: CAT E
      - WATERPROOFNESS: CAT Y
      - FLUIDS SUSCEPTIBILITY: CAT X
      - SAND AND DUST: CAT D
      - FUNGUS: CAT F
      - MAGNETIC EFFECTS: CAT Z
      - POWER INPUT: CAT Z(I)  
(WITH CAT A, 200ms INTERRUPT)
      - VOLTAGE SPIKE: CAT A
      - AUDIO SUSCEPTIBILITY: CAT Z
      - INDUCED SIGNAL SUSCEPTIBILITY: 19, CAT Z
      - RADIO FREQUENCY SUSCEPTIBILITY: CAT RR
      - RF EMISSION: CAT M
      - LIGHTNING-INDUCED SUSCEPTIBILITY: CAT A1XXXX
      - LIGHTNING DIRECT EFFECTS: CAT X
      - ICING: CAT X
      - ESD: CAT A
      - FLAMMABILITY: CAT C
  - TRAY AND CONNECTOR PLATE FINISH: CLEAR CHEM FILM PER MIL-DTL-5541, TYPE II, CLASS 3.
  - APPROXIMATE LOCATION OF CENTER OF GRAVITY SHOWN AS

- INSTALLATION NOTES:**
- FOR PRESSURIZED APPLICATION ONLY, NOT RECOMMENDED FOR INSTALLATION IN UNPRESSURIZED AREAS.
  - ELECTRICAL SPECIFICATIONS (FAN):  
12 VDC  
0.31 AMPS (OPERATING)



# CarlisleIT PART NO.: 200-104609-101

## PRODUCT SPECIFICATION DRAWING

THIRD ANGLE PROJECTION		WEIGHTS		UNLESS OTHERWISE SPECIFIED, DIMENSIONS ARE IN INCHES. DO NOT SCALE DRAWING. TOLERANCES ARE:		SIMILAR TO:	
	-	-	-	FRACTIONS	DECIMALS	ANGULAR	DATE
	-	-	-	XX ± 0.1	X ± 0.05	X ± 0.5°	8-28-18
	-	-	-	.XX ± 0.03	X ± 0.01	X ± 0.25°	DATE
	-	-	-	.XXX ± 0.010			8-28-18
	-	-	-	.XXXX ± 0.0020			DATE
CAD GENERATED DOCUMENT ANY CHANGES TO THIS DOCUMENT MUST BE SUBMITTED TO THE DESIGN/DRAFTING DEPARTMENT FOR PROPER UPDATE		FINAL	184555	TREATMENT	DRAWN: T. RAASCH CHECKED: <i>[Signature]</i> 9/21/18 DESIGNED: D. LONSKI PROJECT: <i>[Signature]</i> 9/21/18 MANUFACTURING: <i>[Signature]</i> 9/21/18		
QTY REQ'D	FINAL/ NEXT DRAWING	PROJECT NO.	PRODUCTION	FINISH	DATE	DATE	DATE
APPLICATION		ADDITIONAL APPROVALS	DATE	SURF AREA SQ INCHES	FAB SQ INCHES REQ'D	CALC WT LBS	ENGINEERING
				-	-	1.560	<i>[Signature]</i> 9/21/18
				SIZE	CAGE CODE	LEVEL	DWG NO.
				D	66197	C	900-104961
				SCALE	EFFECTIVITY:		SHEET
				3/4			1 OF 2

8

7

6

5

4

3

DWG NO. 900-104961

SH 2 REV NC

1

This print and associated documents and the contained information are the confidential property of CarlisleIT. Disclosure of, and/or reproduction of, all or part thereof or manufacture of any part from information contained on this print not specifically permitted by CarlisleIT in writing is forbidden.

\*\*\*\* EAR CONTROLLED \*\*\*\*

REVISION HISTORY				
ZONE	REV.	DESCRIPTION	DATE	APPROVED
	NC	SEE SHEET 1		

D

D

C

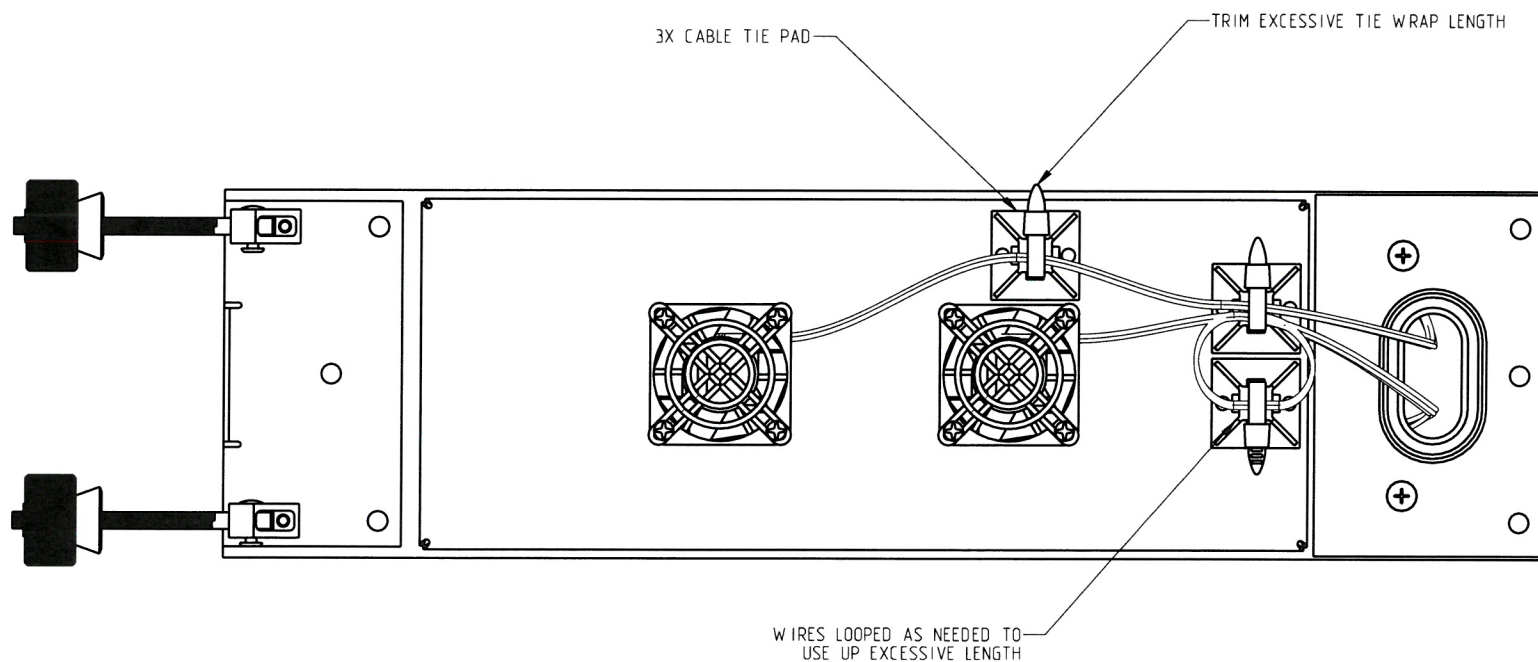
C

B

B

A

A



NAME: TRASCH OBJECT: 900-104961.2 DATE: 21-Sep-18 14:04:19

8

7

6

5

4

3

2

1

**CAD GENERATED DOCUMENT**  
 ANY CHANGES TO THIS DOCUMENT  
 MUST BE SUBMITTED TO THE  
 DESIGN/DRAFTING DEPARTMENT  
 FOR PROPER UPDATE

**CARLISLE** Technologies  
 Carlisle Interconnect Technologies  
 Franklin, WI, 53132  
 (414) 421-5300

SIZE	CAGE CODE	LEVEL	DWG NO.
D	66197	C	900-104961
SCALE	EFFECTIVITY	SHEET 2 OF 2	
1/1	-		