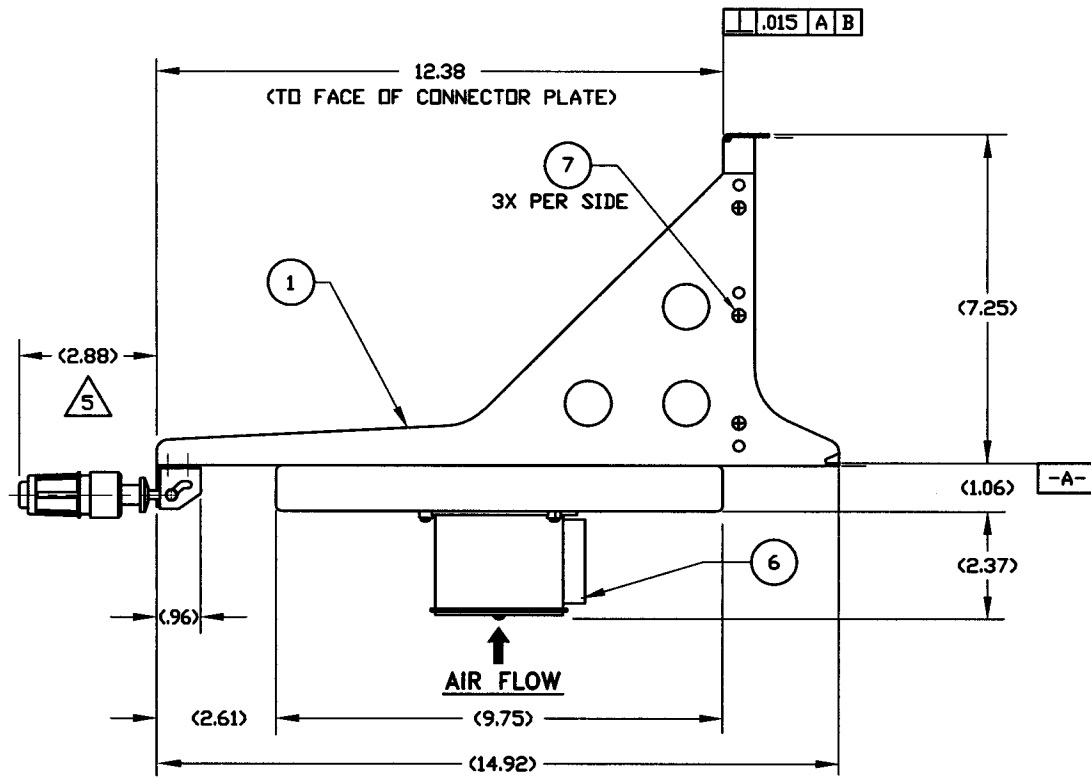
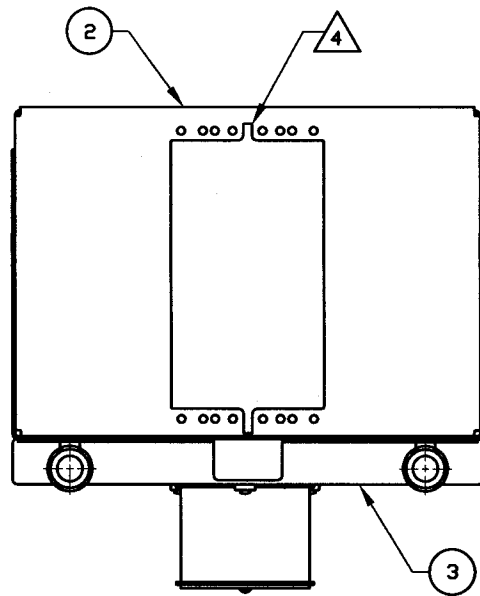
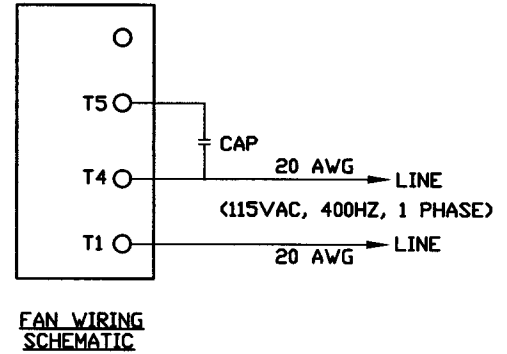
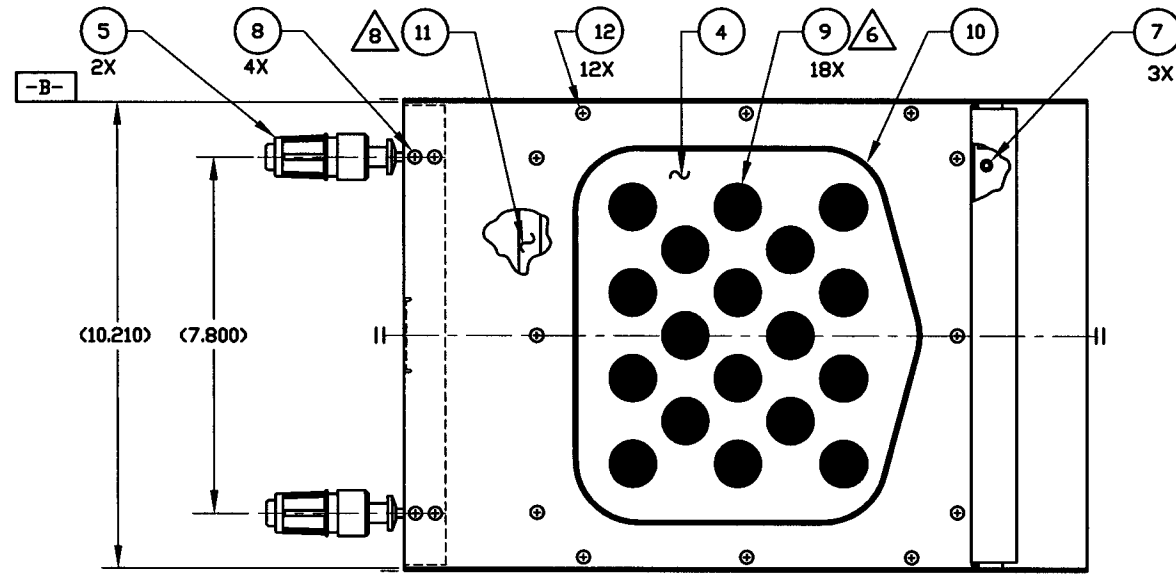


This print and associated documents and the contained information are the confidential property of ELECTRONIC CABLE SPECIALISTS. Disclosure of, and/or reproduction of, all or part thereof or manufacture of any part from information contained on this print not specifically permitted by ELECTRONIC CABLE SPECIALISTS in writing is forbidden.

DWG NO. 6292 SHEET 1 REV. D

REVISIONS						
ECN	SHT.	ZONE	REV.	BRIEF DESCRIPTION (SEE ECN FOR FULL DESCRIPTION)	DATE	APPROVED
4612			N/C	RELEASED FOR FULL PRODUCTION	KPS 11/5/96	K RAIHALA
5328		P/L F/D DS	A	CHNG'D QTY OF ITEM 12 WAS 8 ADDED 4 PLENUM SCREWS CHNG'D CALLOUT WAS 12 8X	MJB 7/13/99	J SHAW
9824			B	ADDED NOTE 9	PS 10/8/99	L. HECKEL
13393			C	ITEM 12 QTY WAS 12	MJP 3/14/01	M. GOSKOWICZ
18694		P/L	D	ITEM 12 QTY WAS 8	WRA 12/24/02	<i>L. Heckel</i>



QTY REQ'D	COMPONENTS PART NO. OR IDENTIFYING NO.	NOMENCLATURE OR DESCRIPTION	MATERIAL/SPECIFICATION	CAGE CODE	ITEM NO.
12	MS24693-C24	SCREW, FLAT HEAD	$\langle \#6-32 \times .25 \text{ LONG} \rangle$		12
A/R	DOW CORNING RTV 732	ADHESIVE SEALANT CLEAR	$\langle \text{SILICONE RUBBER} \rangle$	71984	11
1	10016-108	DEFM. SEAL, 8 MCU	$\langle \text{SILICONE RUBBER} \rangle$		10
18	10736-01	PLUG BUMPER	$\langle \text{RUBBER} \rangle$		9
4	MS24693-C25	SCREW, FLAT HEAD	$\langle \#6-32 \times .31 \text{ LONG} \rangle$		8
9	MS24693-C26	SCREW, FLAT HEAD	$\langle \#6-32 \times .38 \text{ LONG} \rangle$		7
1	S0085-116	FAN ASSY, AC			6
2	10344-101	HOLD DOWN, FRONT INSERTION/EXTRACTION			5
1	10035CC-01	METERING PLATE, 8 MCU	$\langle .040 \text{ AL ALLOY 5052 DR 6061} \rangle$		4
1	S0109CC-408	PLENUM ASSY, 8 MCU	$\langle .040 \text{ AL ALLOY 6061} \rangle$		3
1	10018CC-110	CONNECTOR PLATE ASSY, 8 MCU	$\langle .063 \text{ AL ALLOY 6061} \rangle$		2
1	S0082CC-108	TRAY WELDING ASSY, 8 MCU	$\langle .063 \text{ AL ALLOY 6061} \rangle$		1

-101 ASSEMBLY

9. IDENTIFY WITH ECS P/N AND LOT #, PER EP 210
8. APPLY 11 AROUND SCREW HOLES & CONTACT SURFACES AT ASSEMBLY TO PROVIDE A SEAL BETWEEN 1 & 3.
7. ALTERNATE PART NO.: DOW CORNING P/N RTV-3145.
6. REMOVE ALL (18) PLUGS FROM TRAY AT TIME OF INSTALLATION.
5. MAXIMUM EXTENSION WHEN LRU IS SECURELY FASTENED TO TRAY ASSEMBLY.
4. UNIVERSAL CONNECTOR CUT-OUT FOR ARINC 600, SIZE 1, 2 DR 3.
3. FINISH: CLEAR CHEM FILM PER MIL-C-5541, CLASS 3.
2. DESIGNED TO MEET THE APPLICABLE REQUIREMENTS OF THE FOLLOWING:
 - A: ARINC 600-9, 8 MCU, LEVEL 1 COOLING
 - EXCEPTIONS AND LIMITATIONS TO ARINC 600-9:
 1. MAXIMUM STEADY-STATE HEAT DISSIPATION: 250-360W
 - B: ENVIRONMENTAL CONDITIONS RTCA/DO-160C ENV. CAT. D2-BABXXXXXXXXXXXXXXXXXX.
 - EXCEPTIONS AND LIMITATIONS TO RTCA/DO-160C:
 1. MAX. OPERATING ALTITUDE: 51,000 ft.
 2. MAX COOLANT AIR BULK INLET TEMP 51,000 ft: 15°C
 3. NOT RECOMMENDED FOR INSTALLATION IN PRESSURIZED AREAS.
1. DIMENSIONS AND TOLERANCES PER ANSI Y14.5M-1982.

NOTES: UNLESS OTHERWISE SPECIFIED

THIRD ANGLE PROJECTION

CAD GENERATED DOCUMENT
ANY CHANGES TO THIS DOCUMENT MUST BE SUBMITTED TO THE DESIGN/DRAFTING DEPARTMENT FOR PROPER UPDATE

WEIGHTS	3.8 lbs
STRESS	
UNLESS OTHERWISE SPECIFIED DIMENSIONS ARE IN INCHES	
FRACTIONS ARE:	
DECIMALS ARE:	
ANGULAR & T	
DO NOT SCALE DRAWING	
TREATMENT	
FINISH	
SIMILAR TO	6269
ACT. WF	
CALC WF	
CONTRACT NO.	
DRAWN	K SOMMERS
DATE	9/24/96
CHECKED	K RAIHALA
DATE	11/5/96
DESIGNED	K RAIHALA
DATE	11/5/96
PROJECT	K RAIHALA
DATE	11/5/96
MANUFACTURING	
DATE	
ENGINEERING	T ANTCZAK
DATE	11/5/96

ELECTRONIC CABLE SPECIALISTS FRANKLIN, WI 53132 PHONE: (414) 421-5300	
TITLE TRAY ASSEMBLY, 8 MCU S/S WITH BOTTOM HIGH ALTITUDE FAN	
SIZE	D 66197 C/A
CAGE CODE	6292
LEVEL	
DWG NO.	6292
SCALE	1/2
EFFECTIVITY	
SHEET	1 OF 1