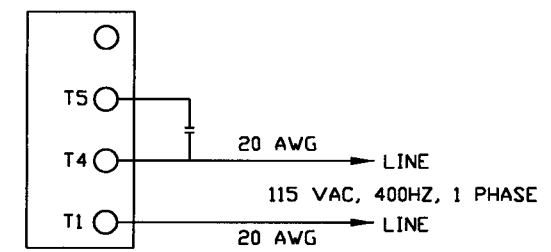
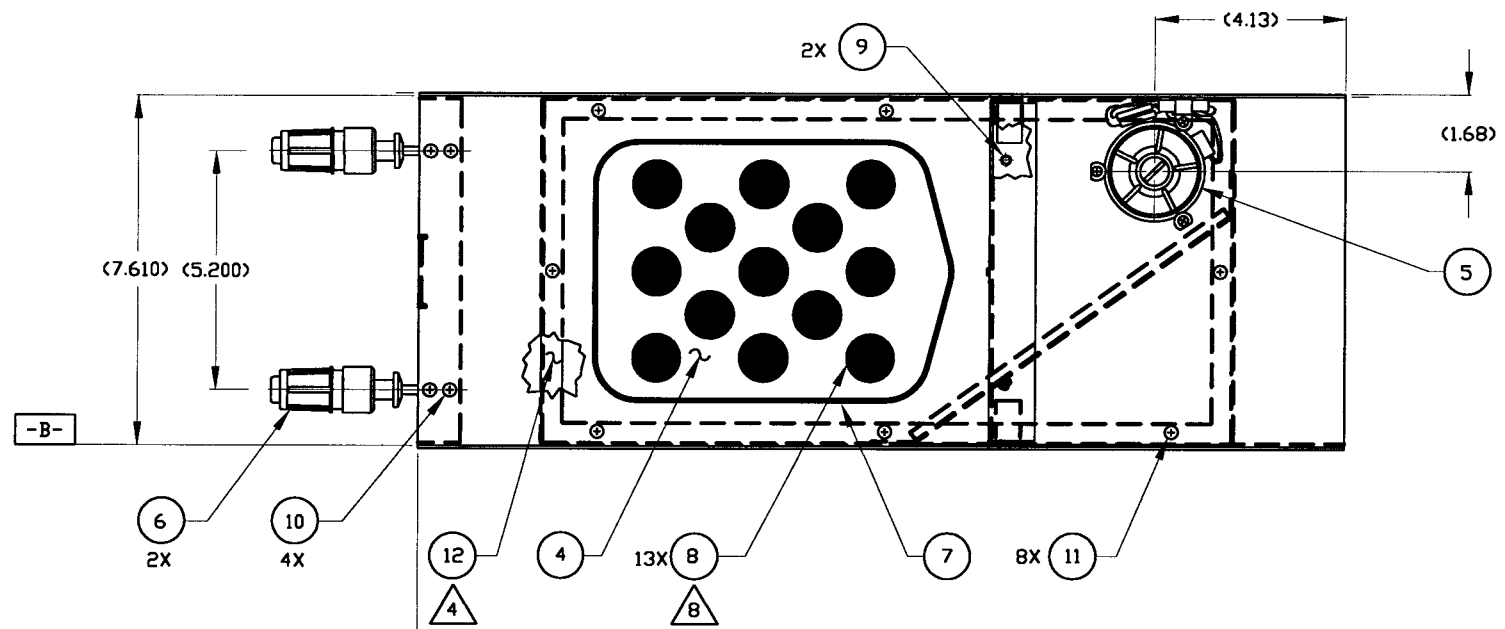
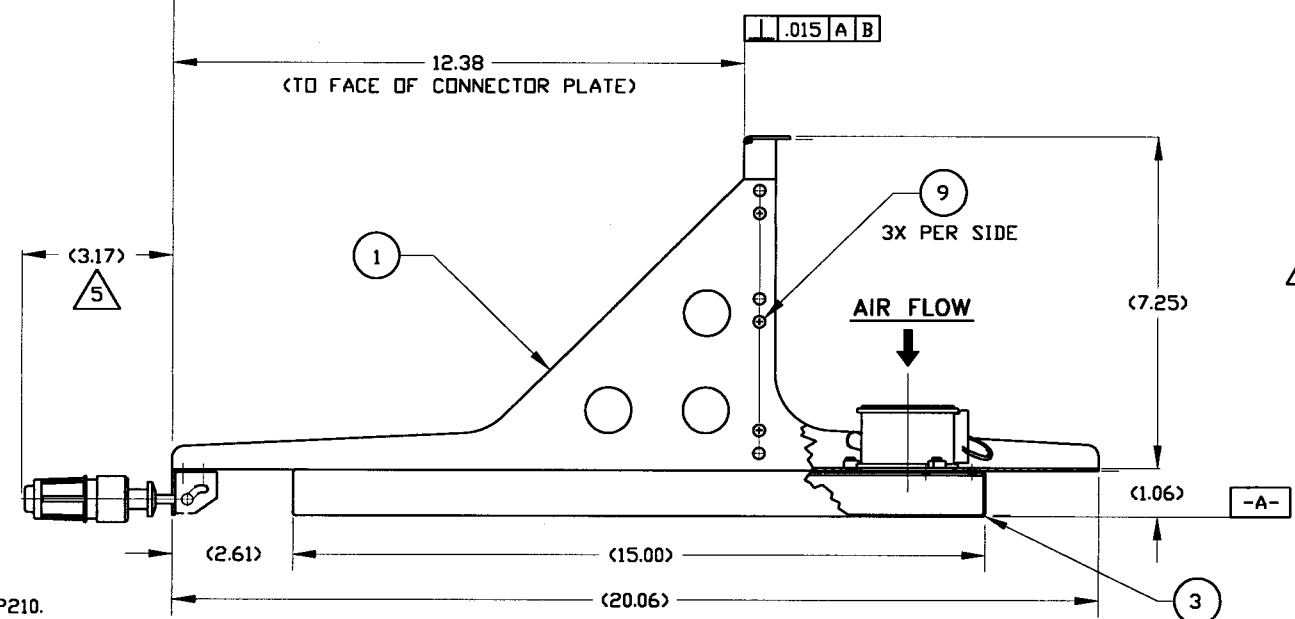
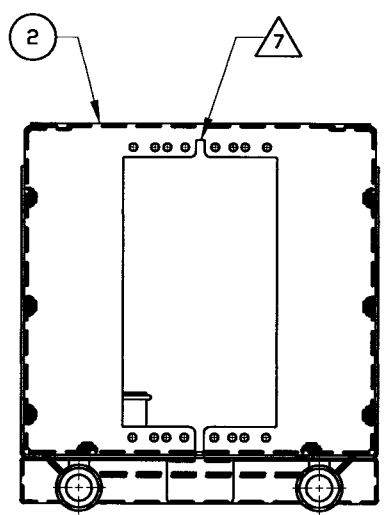


This print and associated documents and the contained information are the confidential property of ELECTRONIC CABLE SPECIALISTS. Disclosure of, and/or reproduction of, all or part thereof or manufacture of any part from information contained on this print not specifically permitted by ELECTRONIC CABLE SPECIALISTS in writing is forbidden.

ECN	SHT.	ZONE	REV.	BRIEF DESCRIPTION (SEE ECN FOR FULL DESCRIPTION)	DATE	APPROVED
3453			N/C	RELEASED	11/20/95	K RAIHALA
6356		B6	A	CHNG'D CALLOUT WAS (288) REMOVED HIDDEN LINES FROM SIDE VIEW CHNG'D CALLOUT FOR ITEMS 9-11 WAS .138-32 REVISED TERMINAL DIAGRAM	7/23/99	J SHAW
9824		AB	B	ADDED NOTE 9	4/19/00	JTS Z. Hekal



FAN MOTOR WIRE TERMINATION DIAGRAM



6 4

A/R	DOW CORNING RTV 3145	ADHESIVE SEALANT, CLEAR	(SILICONE RUBBER)	71984	12
8	MS24693-C24	SCREW, FLAT HEAD	(6-32 X .25 LONG)		11
4	MS24693-C25	SCREW, FLAT HEAD	(6-32 X .31 LONG)		10
8	MS24693-C26	SCREW, FLAT HEAD	(6-32 X .38 LONG)		9
13	10736-01	PLUG BUMPER	(RUBBER)		8
1	10016-106	DEFORMATION SEAL ASSY, 6 MCU	(SILICONE RUBBER)		7
2	10344-101	HOLD DOWN, FRONT INSERTION/EXTRACTION			6
1	S0085-107	FAN ASSY, AC			5
1	10024CC-01	METERING PLATE, 6 MCU	(.040 AL ALLOY 5052 OR 6061)		4
1	S0089-101	PLENUM ASSY, 6 MCU	(.040 AL ALLOY 6061)		3
1	10018CC-108	CONNECTOR PLATE ASSY, 6 MCU	(.063 AL ALLOY 6061)		2
1	S0077CC-106	TRAY ASSY, 6 MCU LEFT REAR FAN	(.063 AL ALLOY 6061)		1

- 9. IDENTIFY WITH ECS P/N AND LOT #, PER EP210.
- 8. REMOVE ALL METERING PLUGS (13) AT AIRCRAFT INSTALLATION SITE.
- 7. UNIVERSAL CONNECTOR CUTOUT PER ARINC 600, SIZE 1, 2 OR 3.
- 6. ALTERNATE PART NO. DOW CORNING P/N RTV-732CLR.
- 5. MAXIMUM EXTENSION WHEN LRU IS SECURELY FASTENED TO TRAY ASSEMBLY.
- 4. APPLY (12) AROUND SCREW HOLES & CONTACT SURFACES AT ASSEMBLY TO PROVIDE A SEAL BETWEEN (1) & (3).
- 3. FINISH: (CLEAR CHEM FILM PER MIL-C-5541, CLASS 3).

(-101) ASSEMBLY

- 2. DESIGNED TO MEET THE APPLICABLE REQUIREMENTS OF THE FOLLOWING:
 - A: ARINC 600-9: 6 MCU,
 - B: RTCA/DD-160C ENV. CAT. A1-BABXXXXXXXXXXXXXXXXXX
- 1. DIMENSIONS AND TOLERANCES PER ANSI Y14.5M-1982.

NOTES: UNLESS OTHERWISE SPECIFIED

<p>THIRD ANGLE PROJECTION</p>		<p>WEIGHTS</p> <p>STRESS</p>		<p>UNLESS OTHERWISE SPECIFIED DIMENSIONS ARE IN INCHES TOLERANCES ARE:</p> <p>FRACTIONS ± DECIMALS ± ANGULAR ±</p> <p>XX ± .03 .XXX ± .010 DO NOT SCALE DRAWING</p>		<p>CONTRACT NO.</p> <p>DRAWN S KANTORSKI DATE 9/27/95</p> <p>CHECKED K RAIHALA DATE 11/20/95</p> <p>DESIGNED K RAIHALA DATE 11/20/95</p> <p>PROJECT K RAIHALA DATE 11/20/95</p> <p>MANUFACTURING DATE</p> <p>ENGINEERING T ANTCAK DATE 11/20/95</p>		<p>ELECTRONIC CABLE SPECIALISTS</p> <p>FRANKLIN, WI 53132</p> <p>PHONE: (414) 421-5300</p>	
<p>CAD GENERATED DOCUMENT</p> <p>ANY CHANGES TO THIS DOCUMENT MUST BE SUBMITTED TO THE DESIGN/DRAFTING DEPARTMENT FOR PROPER UPDATE.</p>		<p>COMP/ASSY PART NO. -101</p> <p>QTY REQ'D 1</p> <p>DRAWING NO. FINAL</p> <p>PROJECT NO. 95-0000</p>		<p>PRODUCTION</p> <p>QUALITY ASSURANCE</p> <p>ADDITIONAL APPROVALS</p> <p>DATE</p>		<p>TITLE</p> <p>TRAY ASSEMBLY, 6 MCU, S/L, w/LEFT REAR FAN</p>		<p>SCALE 1/2</p> <p>EFFECTIVITY</p> <p>SHEET 1 OF 1</p>	