

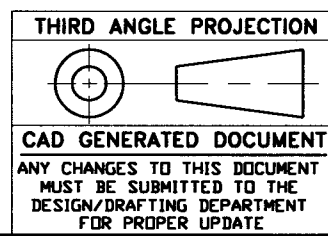
This print and associated documents and the contained information are the confidential property of ELECTRONIC CABLE SPECIALISTS. Disclosure of, and/or reproduction of, all or part thereof or manufacture of any part from information contained on this print not specifically permitted by ELECTRONIC CABLE SPECIALISTS in writing is forbidden.

REVISIONS						
ECN	SHT	ZONE	REV	DESCRIPTION	DATE	APPROVED
			N/C	RELEASED		
			A	ON F/D: REDESIGNED & RERAWN TO CONFORM TO A NEW PLENUM. ADDED SHEET 2. ON P/L: ADDED ITEM 13. ITEM 4 WAS S0164-106. ITEM 12 WAS S0105-102.	LJH 6/14/93	C ASSEF B KOJIS V SIEBERT
			B	SEE ECN 128 & 137.	LJH 10/14/93	C ASSEF V SIEBERT
3237		P/L	C	ADDED ASSY 6068 ADDED NOTE 11 ADDED NEW SHEET 2 CHANGED SHEET 3 WAS SHEET 2	SJR	
3595		P/L		ITEM 9 QTY WAS 16 ADDED ITEM 15 CHANGED BALLOON CALLOUT WAS 9		
3636	2/3	D3		ITEM 12 P/N WAS MSS1957-24		
5596		P/L		ITEM 2 P/N WAS 10018CC-108	6/20/97	T ANTCZAK
		P/L		ITEM 8 P/N WAS LAVELLE 40-8PB		
		P/L		ITEM 11 P/N WAS S0105-104		
		P/L		ITEM 13 P/N WAS C0078-01		
		P/L		DELETED NOTES 4 & 6 ADDED NOTES 7 THRU 11 CHANGED NOTE 5 TO NEW FORMAT ADDED PROJECTION/CAD BLK TO TITLE BLK ADDED HOLD DOWN DIM'S 2.88, .96 ADDED FAN SCHEMATICS		
9824	1	BB	D	ADDED NOTE 12	JTS 4/3/99	<i>[Signature]</i>

QTY REQ'D	QTY REQ'D	QTY REQ'D	ASSEMBLY PART NO.	COMPONENTS PART NO. OR IDENTIFYING NO.	NOMENCLATURE OR DESCRIPTION	MATERIAL/SPECIFICATION	CAGE CODE	ITEM NO.
8	8	8	MS24693-C24		SCREW, FLAT HEAD	(#6-32 X .25 LONG)		15
4	4	4	MS24693-C25		SCREW, FLAT HEAD	(#6-32 X .31 LONG)		14
1			C0078CC-101		TRAY, 6 MCU SPECIAL	(.063 AL ALLOY 6061)		13
6	6	6	MSS1957-26		SCREW, PAN HEAD	(#6-32 X .25 LONG)		12
1	1	1	S0105CC-104		COVER ASSY, PLENUM	(.040 AL ALLOY 6061)		11
A/R	A/R	A/R	DOW CORNING RTV-3145		SEALANT, ADHESIVE	(SILICONE RUBBER)	71984	10
8	8	8	MS24693-C26		SCREW, FLAT HEAD	(#6-32 X .38 LONG)		9
13	13	13	10736-01		PLUG BUMPER	(RUBBER)		8
1	1	1	10016-106		DEFM. SEAL, 6 MCU	(SILICONE RUBBER)		7
1	1	1	10024CC-01		METERING PLATE 6 MCU	(.040 AL ALLOY 5052 DR 6061)		6
1	1	1	S0085-104		FAN ASSEMBLY, DC	(ROTRON P/N 011439)		5
1	1	1	S0164-206		PLENUM ASSY. 6 MCU	(.040 AL ALLOY 6061)		4
2	2	2	10344-101		HOLD DOWN, FRONT INSERTION/EXTRACTION			3
1	1	1	10018-108		CONNECTOR PLATE ASSY, 6 MCU	(.063 AL ALLOY 6061)		2
	1	1	S0082CC-106		TRAY WELDING ASSY, 6 MCU	(.063 AL ALLOY 6061)		1

12. IDENTIFY WITH ECS P/N AND LOT#, PER EP210.
11. PART NO. FOR THIS ASSY IS 6068.
10. ALTERNATE PART NO. RTV-732CLR, DOW CORNING
9. REMOVE ALL (8) (13 PLACES) FROM TRAY ASSY AT TIME OF INSTALLATION.
8. MAXIMUM EXTENSION WHEN LRU IS SECURELY FASTENED TO TRAY ASSY
7. UNIVERSAL CONNECTOR CUT-OUT PER ARINC 600; SIZE 1, 2 OR 3
6. - DELETED -
5. DESIGNED TO MEET THE APPLICABLE REQUIREMENTS OF THE FOLLOWING:
A. ARINC 600: 6 MCU, LEVEL 1 COOLING
B. RTCA/DD-160C ENV. CAT. A1-BABXXXXXXXXXXXXXXXXXX
4. - DELETED -
3. APPLY (10) AROUND SCREW HOLES & CONTACT SURFACES AT ASSEMBLY TO PROVIDE A SEAL BETWEEN (1)/(13)/(11) & (4).
2. FINISH: (CLEAR CHEM FILM PER MIL-C-5541, TYPE II, CLASS 3).
1. DIMENSIONS AND TOLERANCES PER ANSI Y14.5M-1982.

NOTES: UNLESS OTHERWISE SPECIFIED



PART/ASSY DASH NO.	QTY REQ'D	REV	DATE	PROJECT NO.
-101 & -102	1	FINAL	92-0076	
APPLICATION				

UNLESS OTHERWISE SPECIFIED DIMENSIONS ARE IN INCHES TOLERANCES ARE:	CONTRACT NO.
FRACTIONS ± DECIMALS ±.03 ANGULAR ± 1'	DRAWN BY: D SWITALSKI DATE: 12/11/92
DO NOT SCALE DRAWING	CHECKED BY: C ASSEF DATE: 12/14/92
TREATMENT	DESIGNED BY: B KOJIS DATE: 12/14/92
FINISH	PROJECT NO.: 92-0076 DATE: 12/14/92
SIMILAR TO	MFG ENGR: W SIEBERT DATE: 12/14/92
ACT. WT	ENGR MGR: W SIEBERT DATE: 12/14/92
CALC. WT	

ELECTRONIC CABLE SPECIALISTS
FRANKLIN, WI 53132
PHONE: (414) 421-5300

SCALE 1/2 EFFECTIVITY SHEET 1 OF 3

TRAY ASSEMBLY, 6 MCU
S/S W/ LEFT SIDE DC FAN

D 66197C/A 6068

