

8 7 6 5 4 3 2 1

*** EXPORT CONTROLLED DOCUMENT - EAR ***
 The information in this document is subject to the export controls in accordance with the export administration regulations. Diversion contrary to U.S. Law is prohibited.

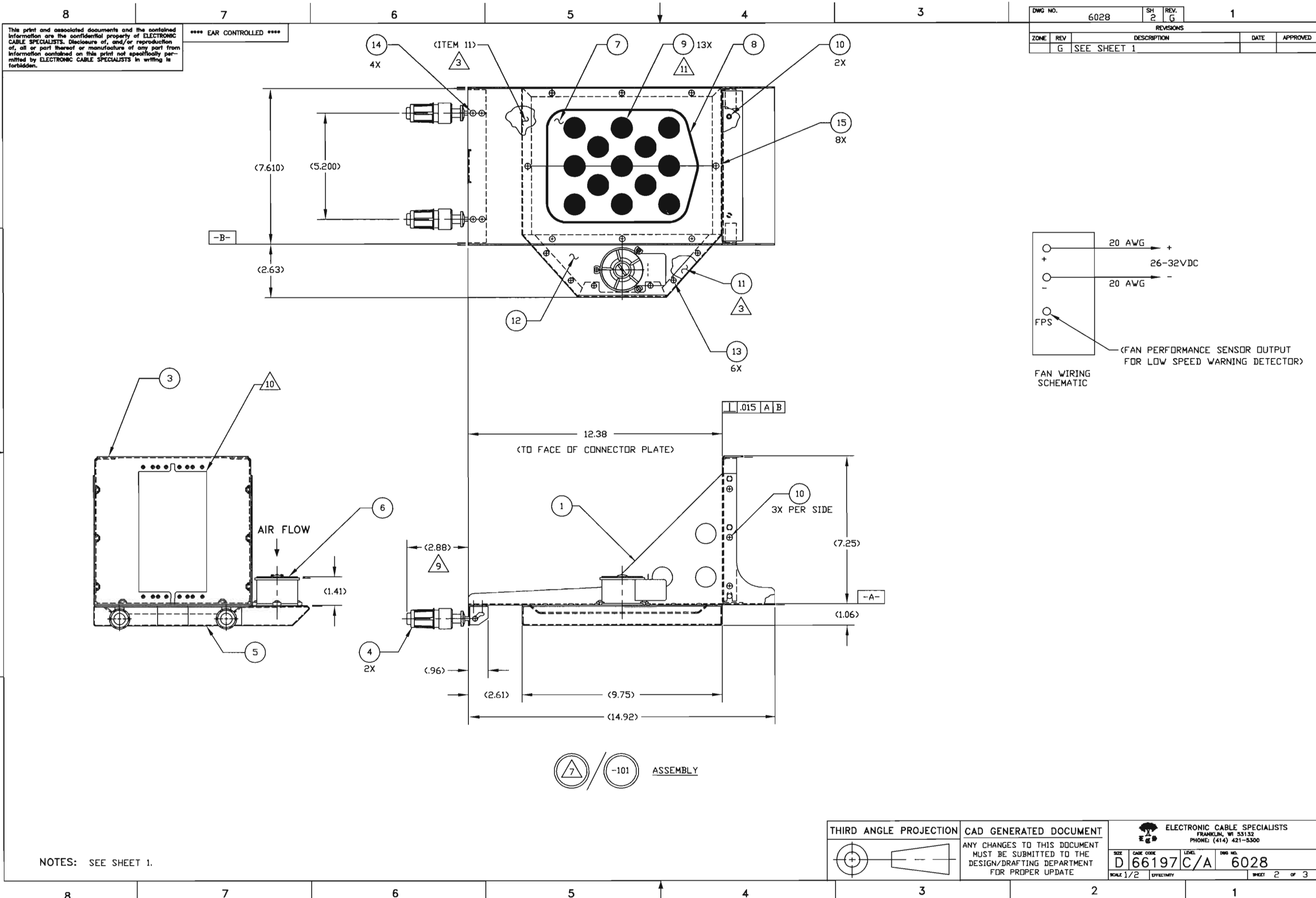
This print and associated documents and the contained information are the confidential property of ELECTRONIC CABLE SPECIALISTS. Disclosure of, and/or reproduction of, all or part thereof or manufacture of any part from information contained on this print not specifically permitted by ELECTRONIC CABLE SPECIALISTS in writing is forbidden.

DWG NO.		SH	REV.	REVISIONS		
ECN	SHT	ZONE	REV.	DESCRIPTION	DATE	APPROVED
			N/C	RELEASED		
			A	ON P/L: REVISED PART NOS. ON F/D: REVISED PLENUM DESIGN	10/6/92	DS
			B	ON P/L & F/D: REVISED PLENUM DESIGN AND P/N'S	12/16/92	C ASSEF B KOJIS
			C	ON P/L & F/D: REVISED PLENUM DESIGN AND P/N'S ADDED SHEET 2	6/8/93	C ASSEF B KOJIS V SIEBERT
			D	SEE ECN 128 & 137	10/13/93	C ASSEF V SIEBERT
3237		P/L	E	ADDED ASSY 6028 ADDED NOTE 7		SJR
3595		P/L		ITEM 10 QTY WAS 16 ADDED ITEM 15		
3636	2/3	D3		CHANGED BALLOON CALLOUT WAS 10		
5596		P/L		ITEM 13 P/N WAS MS51957-24		
		P/L		ITEM 2 P/N WAS C0078-01		
		P/L		ITEM 9 P/N WAS LAVELLE 40-8PB		
		P/L		ITEM 12 P/N WAS S0105-104	6/20/97	T ANTCAK
	2/3	B6		DELETED NOTES 4 & 6		
	2/3	C2		ADDED NOTES 8 THRU 11 CHANGED NOTE 5 TO NEW FORMAT ADDED NEW SHEET 2 CHANGED SHEET 3 WAS SHEET 2 ADDED HOLD DOWN DIM'S (288), (96) ADDED FAN SCHEMATICS		
9824	1	B8	F	ADDED NOTE 12	3/3/05	JTS L HECKEL
50146	1	P/L	G	S0164CC-206 WAS S0164-206 UPDATED NOTE 2.	7/22/05	L JH

8	8	8	MS24693-C24	SCREW, FLAT HEAD	<#6-32 X .25 LONG>		15
4	4	4	MS24693-C25	SCREW, FLAT HEAD	<#6-32 X .31 LONG>		14
6	6	6	MS51957-26	SCREW, PAN HEAD	<#6-32 X .25 LONG>		13
1	1	1	S0105CC-104	COVER ASSY, PLENUM	<.040 AL ALLOY 6061>		12
A/R	A/R	A/R	DOW CORNING RTV-3145	ADHESIVE SEALANT	<SILICONE RUBBER>	71984	11
8	8	8	MS24693-C26	SCREW, FLAT HEAD	<#6-32 X .38 LONG>		10
13	13	13	10736-01	PLUG BUMPER	<RUBBER>		9
1	1	1	10016-106	DEFM. SEAL, 6 MCU	<SILICONE RUBBER>		8
1	1	1	10024CC-01	METERING PLATE 6 MCU	<.040 AL ALLOY 5052 OR 6061>		7
1	1	1	S0085-104	FAN ASSEMBLY, DC			6
1	1	1	S0164CC-206	PLENUM ASSY, 6 MCU	<.040 AL ALLOY 6061>		5
2	2	2	10344-101	HOLD DOWN, FRONT INSERTION/EXTRACTION			4
1	1	1	10018CC-108	CONNECTOR PLATE ASSY, 6 MCU	<.063 AL ALLOY 6061>		3
1			C0078CC-101	TRAY WELDING ASSY, 6 MCU	<.063 AL ALLOY 6061>		2
	1	1	S0082CC-106	TRAY WELDING ASSY, 6 MCU	<.063 AL ALLOY 6061>		1
QTY REQ'D	QTY REQ'D	QTY REQ'D					
-102	-101	7		COMPONENTS PART NO. OR IDENTIFYING NO.	NOMENCLATURE OR DESCRIPTION	MATERIAL/SPECIFICATION	CAGE CODE ITEM NO.

12. IDENTIFY WITH ECS P/N AND LOT#, PER EP210.
11. REMOVE ALL 9 (13 PLACES) FROM TRAY ASSY AT TIME OF INSTALLATION.
10. UNIVERSAL CONNECTOR CUT-OUT PER ARINC 600; SIZE 1, 2 OR 3
9. MAXIMUM EXTENSION WHEN LRU IS SECURELY FASTENED TO TRAY ASSY
8. ALTERNATE PART NO. RTV-732CLR, DOW CORNING
7. PART NO. FOR THIS ASSY IS 6028.
6. - DELETED -
5. DESIGNED TO MEET THE APPLICABLE REQUIREMENTS OF THE FOLLOWING:
 A. ARINC 600: 6 MCU, LEVEL 1 COOLING
 B. RTCA/DO-160C ENV. CAT. A1-BABXXXXXXXXXXXXXXXXXX
4. - DELETED -
3. APPLY 11 AROUND SCREW HOLES & CONTACT SURFACES AT ASSEMBLY TO PROVIDE A SEAL BETWEEN 1/2/12 & 5.
2. FINISH: <CLEAR CHEM FILM PER MIL-DTL-5541, TYPE II, CLASS 3>.
1. DIMENSIONS AND TOLERANCES PER ANSI Y14.5M-1982.
- NOTES: UNLESS OTHERWISE SPECIFIED

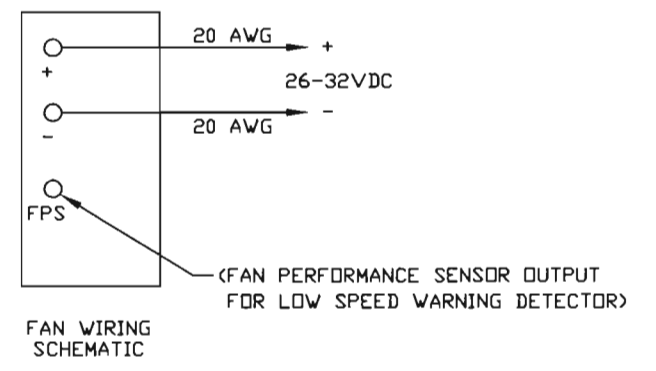
THIRD ANGLE PROJECTION		HEIGHTS		UNLESS OTHERWISE SPECIFIED DIMENSIONS ARE IN INCHES TOLERANCES ARE:		CONTRACT NO.		ELECTRONIC CABLE SPECIALISTS	
		STRESS		FRACTIONS: A DECIMALS: JOE R.L.J. ANGULAR: 2 T		DRAWN BY: D CIESIELCZYK DATE: 6/25/92		FRANKLIN, WI 53132 PHONE: (414) 421-5300	
CAD GENERATED DOCUMENT		PRODUCTION		TREATMENT: FRESH		CHECKED BY: C ASSEF DATE: 6/25/92		TITLE: TRAY ASSEMBLY, 6 MCU S/S W/ RIGHT SIDE DC FAN	
ANY CHANGES TO THIS DOCUMENT MUST BE SUBMITTED TO THE DESIGN/DRAFTING DEPARTMENT FOR PROPER UPDATE		QUALITY ASSURANCE		DO NOT SCALE DRAWING		DESIGNED BY: C ASSEF DATE: 6/25/92		SIZE: D 66197C/A	
PART/ASSY DASH NO.	QTY REQ'D PER ASSY	NEXT FINAL	NEXT/FINAL DWG	PROJECT NO.	APPLICATION	SIMILAR TO	ACT. BY	CALC BY	DWG NO. 6028
-101 & -102	1	FINAL	92-0082						SCALE 1/2 EFFECTIVITY SHEET 1 OF 3
MFG DWR		DATE		ENGR MGR		DATE			
F A WHITSON		7/8/92							



This print and associated documents and the contained information are the confidential property of ELECTRONIC CABLE SPECIALISTS. Disclosure of, and/or reproduction of, all or part thereof or manufacture of any part from information contained on this print not specifically permitted by ELECTRONIC CABLE SPECIALISTS in writing is forbidden.

*** EAR CONTROLLED ***

DWG NO.	6028	SH	2	REV.	G	1
REVISIONS						
ZONE	REV	DESCRIPTION			DATE	APPROVED
	G	SEE SHEET 1				



NOTES: SEE SHEET 1.

THIRD ANGLE PROJECTION	CAD GENERATED DOCUMENT	ELECTRONIC CABLE SPECIALISTS FRANKLIN, WI 53132 PHONE: (414) 421-5300	
ANY CHANGES TO THIS DOCUMENT MUST BE SUBMITTED TO THE DESIGN/DRAFTING DEPARTMENT FOR PROPER UPDATE	SCALE 1/2	SIZE D	CASE CODE 66197
		LEVEL C/A	DWG NO. 6028
			SHEET 2 OF 3