

REVISION HISTORY						
ECN	SHT	ZONE	REV	DESCRIPTION	DATE	APPROVED
			X	DEVELOPMENT	8/1/00	B. MATHUR
14608			N/C	RELEASED FOR FULL PRODUCTION	10/16/01	P. JOBE
14671		P/L	A	ADDED ITEM 16. QTY. OF IT. 11 WAS 10.	MAG 10/22/01	B. MATHUR
15942		F/O P/L	B	UPDATED GEOMETRY TO SHOW HOLES ADDED ITEM 17	GJS 6/17/02	B. MATHUR
17953		D4	C	CHANGED THE BREAKOUT VIEW LOCATION FOR ITEM 11. 2X	BJM 7/25/03	B. Mathur

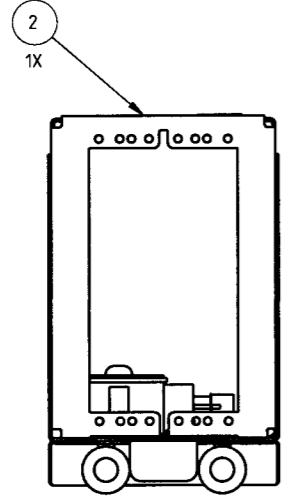
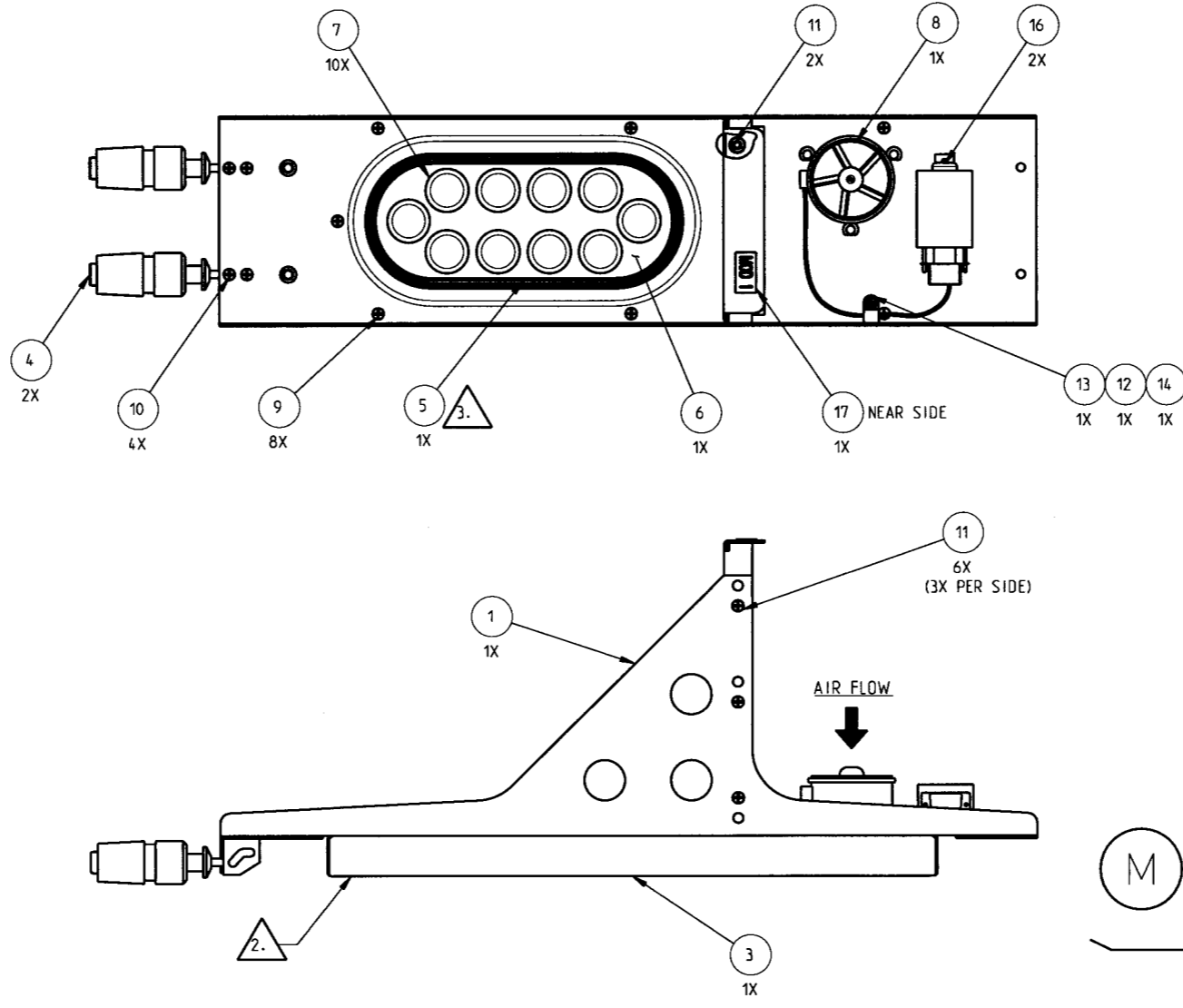
This print and associated documents and the contained information are the confidential property of ELECTRONIC CABLE SPECIALISTS. Disclosure of, and/or reproduction of, all or part thereof or manufacture of any part from information contained on this print not specifically permitted by ELECTRONIC CABLE SPECIALISTS in writing is forbidden.

NOTES: UNLESS OTHERWISE SPECIFIED
GENERAL NOTES:

1. DIMENSIONS AND TOLERANCES PER ASME Y14.5M-1994.

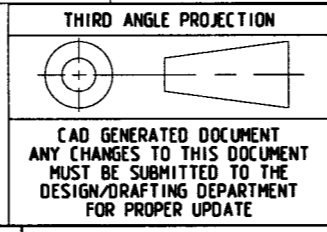
ASSEMBLY NOTES:

- 2. APPLY SEALANT AROUND SCREW HOLES AND CONTACT SURFACES AT ASSEMBLY TO PROVIDE A SEAL BETWEEN TRAY AND PLENUM.
- 3. APPLY SEALANT AROUND DEFORMATION PRIOR TO ASSEMBLING DEFORMATION SEAL TO TRAY.
- 4. IDENTIFY WITH ECS PART NO. AND LOT# PER EP 210.
- 5. FUNCTIONAL TEST REQUIREMENTS: APPLY POWER 28 VDC TO OPERATE FAN.



1	11099-01	PLACARD, WHITE ON BLACK (MOD 1)	-	-	17
2	MS24693-C4	SCREW, FLAT HEAD #4-40 X .38 LONG	-	-	16
AR	DOW CORNING P/N: RTV-3145	ADHESIVE SEALANT, CLEAR	SILICONE RUBBER	RTV-732-CLR	15
1	MS51957-17	SCREW, PAN HEAD #4-40 X 0.500 LG.	-	-	14
1	NAS1149DN432J	WASHER, FLAT #4 X .032 THK, ALUM	-	-	13
1	C0167-01	CLAMP	NYLON	-	12
8	MS24693-C26	SCREW, FLAT HEAD #6-32 X .38 LONG, CRES	-	-	11
4	MS24693-C25	SCREW, FLAT HEAD #6-32 X .31 LONG, CRES	-	-	10
8	MS24693-C24	SCREW, FLAT HEAD #6-32 X .25 LONG, CRES	-	-	9
1	S0085-131	FAN ASSEMBLY	DC FAN	-	8

10	10736-01	PLUG BUMPER	RUBBER	-	-	7
1	10025CC-01	METERING PLATE, 4 MCU	ALUM ALLOY CLEAR CHEM FILM	-	-	6
1	10016-104	DEFORMATION SEAL ASSEMBLY	SILICONE RUBBER	-	-	5
2	10344-101	HOLD DOWN, FRONT, INSERTION/EXTRACTION	-	-	-	4
1	S0067CC-104	LONG PLENUM ASSY	-	-	-	3
1	10018CC-106	CONNECTOR PLATE ASSEMBLY, 4 MCU	-	-	-	2
1	200-88648CC-101	TRAY WELDING ASSEMBLY, 4 MCU S/L	-	-	-	1
	200-85588-101	TRAY ASSEMBLY, REAR MOUNTED FAN, 4 MCU S/L	-	-	-	-



CAD GENERATED DOCUMENT ANY CHANGES TO THIS DOCUMENT MUST BE SUBMITTED TO THE DESIGN/DRAFTING DEPARTMENT FOR PROPER UPDATE

QTY.	FINAL/NEST	PROJECT NO.	QUALITY ASSURANCE	ADDITIONAL APPROVALS	DATE

PARTS LIST		CONTRACT NO.		ELECTRONIC CABLE SPECIALISTS	
DRAWN	L HECKEL	DATE	7/10/00	FRANKLIN, WI 53132	
CHECKED	B. MATHUR	DATE	10/16/01	PHONE: (414) 421-5300	
DESIGNED	M. GOSKOWICZ	DATE	10/10/01	TITLE	
PROJECT	B. MATHUR	DATE	10/16/01	TRAY ASSEMBLY, REAR MOUNTED	
MANUFACTURING	DVH	DATE	10/16/01	FAN, 4 MCU S/L	
ENGINEERING	B. MATHUR	DATE	10/11/01	SIZE	CAGE CODE
				D	66197
				LEVEL	A
				DWG NO.	200-85588-101
				SCALE	1/2
				EFFECTIVITY	-
				SHEET	1 of 1